



اريجو للمصاعد

ERIGO ELEVATORS AND TRADING LLC







ABOUT US

Erigo Elevators was founded in 2008, We specialize in Designing, Consulting, Delivering and Maintaining Vertical Transportation solution. We, Erigo Elevator with our advanced and competent solution offering at an affordable cost of ownership and No compromise in Quality approach has enabled us in meeting our customer expectation.

We are team of self-motivated professionals inspired by visionary leadership of state of Qatar and proud to be part of state's infrastructure development.

Erigo elevators undertake maintenance, repair, supply, installation and modernization of all types of Elevators, Escalators, Travellators and dumb-waiters in the vertical transportation industry.

We leverage decades of experience which provides value to our customer in line with extensive pool of committed and dedicated multivendor skilled work forces. We value our customer and maintain the Trust on us by delivering what we have committed.



MAINTENANCE & REPAIR SERVICES

We understand either as an owner or as a management it is very important to avoid breakdowns and reduce wear and tear of your elevator to perform with safety at all times. Hence effective and qualitative periodic maintenance plays an important role to keep the performance and life span of your machines.

Erigo elevators does the maintenance in a systematic way for all major brands of elevators like Otis, Mitsubishi, Schneider, Unite, Sigma, Kone, Hyundai, Fuji etc. with commitment beyond compare. We provide Erigo Standard and Erigo Plus packages as per the condition of the machinery and customer need. We are maintaining more than 700 units including various types of elevators, escalators and dumbwaiters from different manufacturers.

ERIGO STANDARD

MAINTENANCE PACKAGES

Erigo standard offers to the customer 24 hours emergency service and routine monthly maintenance services without any replacement of any equipments. Monthly service comprises the following works.

- Cleaning of car top, pit and machine
- Checking/Cleaning/Adjustments of motor and accessories
- Checking/Cleaning/Adjustments of landing entrances
- Checking/Cleaning/Adjustments of signals, alarm, display, buttons Etc.
- Checking/Cleaning/Adjustments of car entrance and car operator
- Checking/Cleaning/Adjustments of controller and accessories
- Checking/Cleaning/Adjustments of selector and floor levels
- Checking/Cleaning/Adjustments of machine valve block and tank
- Checking/Cleaning/Adjustments of car frame equipments and accessories

- Checking/Cleaning/Adjustments of ropes and top wheels
- Checking/Cleaning/Adjustments of counter weights pit equipments
- Checking/Cleaning/Adjustments of lubricating gates hoist way and related accessories
- Checking/Cleaning/Adjustments of governor
- Checking/Cleaning/Adjustments of safety related circuits and related functions
- Checking/Cleaning/Adjustments of automatic landing devices, emergency alarms, lamp.



ERIGO PLUS

Erigo plus offers customer 24 hours emergency service and routine monthly maintenance service with replacement of equipments. The scope of the work will be same and mentioned in Erigo standard. Erigo Plus provides additional protection on the bellow mentioned spareparts.



- ✓ LANDING OPERATION PUSH BUTTONS
- ✓ CAR OPERATING PUSH BUTTONS
- ✓ LANDING DOOR CONTACTS
- ✓ CARD DOOR CONTACTS
- ✓ DOOR ROLLERS
- ✓ UP-DOWN LIMIT SWITCHES
- ✓ SLOW-DOWN LIMIT SWITCHES
- ✓ CARD DOOR SHOES
- ✓ LANDING DOOR SHOES.
- ✓ COUNTER RAIL GUIDE SHOE
- ✓ FLOOR LEVEL INDICATOR
- ✓ OVER SPEED GOVERNOR SWITCHES
- ✓ TENSION WEIGHT SWITCHES
- ✓ SAFETY GOVERNOR SWITCHES
- ✓ LANDING DOOR WIRE ROPE
- ✓ LANDING LIGHTS
- ✓ ARRIVAL GONG

SIMPLE WE STOP AT ALL STOPS



WHY SHOULD ERIGO ELEVATORS

- ◆ Excellent in technology irrespective of manufacturer.
- ◆ Stocking ready to use original spare parts to ensure safe and complete performance.
- ◆ Experienced hands in repairing. 24 x 7 Emergency and on call service.
- ◆ Helping hands are one call distance apart.
- ◆ Variety of economical plans for individual and multiple units.
- ◆ Dedicated team for each client.



INSTALLATION

Our team of expertise will make a perfect blend with customer requirement with the latest technology in the era. We believe that service excellence begins with each employee committed to improve the things - no matter how small - that are in their control. By keeping an at your service attitude and striving to exceed our customers and each other expectations, we are working hard to become a benchmark for superior service.

We are in the supply and installation and various types of elevators and escalators from the having TUV and ISO 9001 Certification in the Europe and far east. Our products are supplied based on customer requirement, cost effectiveness and enhanced functional features, which include installation process, installation subsequent to the installation we guarantee the product quality and performance, supply the spare parts and provide 24 hours on-call service.

- Home elevator for villas
- Standard elevators for low rise building
- High speed elevators for high rise building
- Dumbwaiters
- Freight elevators
- Bed elevators for hospitals
- Panoramic or Glass elevators
- Escalators and Trivolators
- Dust, Fire and explosion proof elevators for industrial purpose

INSTALLATION PROCESS



Pre-installation (Free of charge)

Site inspection, Designing and budget preparation, job scheduling



Installation

Installation & commissioning as per the time frame by the experienced hands



Post installation

Periodic service, maintenance and education program on emergency management

Subsequent to the installation we guarantee the products quality and performance, supply the spare parts and provide 24 hours on - call service.

MODERNIZATION

Erigo Elevators upgrade old elevators into high tech and modern elevators regardless of the manufacturer, design or condition. Modernization includes everything from minor replacement of elevator interior items, to major component upgrades that improve operating performance or energy efficiency, all the way up to complete systems overhaul and replacement.



Efficient



User Friendly



Comfortable



Energy Saving



Quiet Operation



Safe



Reliable

INVENTORY DEPARTMENT

The efficiency and success of an elevator company verymuch linked with the inventory department, which is capable to deliver the spare parts irrespective of the manufacture and model.

Our experienced hands in the store have a strong relationship with parts suppliers and always keep the rack with spares, which ensures customer satisfaction and cost effective replacement without delay.



EMERGENCY SERVICE

24 X 7 X 365 DAYS EMERGENCY SERVICE ASSURING JUST A PHONE CALL AWAY.

Our telephones are answered by responsible technicians and ensure service without any delay. We have on-call technicians who are equipped with an extensive spare parts inventory for quick response.



To get perfect attitude professionals, for your hassle free and cost effective altitued management, do an immediate try on **Mob: +974 30054050**, www.erigo.co, info@erigo.co



EQUIPMENT SURVEY

Erigo elevators conduct detailed equipment survey in annually or as and when requested by the customer and also the maintenance audit and safety test. Our well experienced engineers' survey and they report the condition of the equipment and suggest suitable modernization for your building to avoid costly and time consuming replacement.



ELEVATOR CONSULTANCY

We discuss and suggest various cost effective options at the design stage of the building for maximum utilization of space, assuring that the aesthetic design and architect-travel value of the building is not interfered.



ERIGO EDUCATION PROGRAM EMERGENCY MANAGEMENT

Keeping our vision in mind, we not only do the maintenance or installation works but also we take responsibility to educate the building in charge to manage the emergency situation to save all valuable lives in the lift. A specially designed training program by the expert hands including members from safety and technical departments will conduct the training at the respective site and in house. Erigo Elevators is the first company in Qatar conducting such a valuable training program for their clients to keep our great vision.

We hope the information provided above is sufficient to get our company qualified and considered for providing services to your esteemed organization for your various requirements in the vertical transportation industry.

INTEGRATED TYPE SYSTEMS

Elevator integrated controller

Simple and concise functional parameter design is convenient for debugging to maximum extent.

Automatic production of N-curve, Automatic recognition of super short floor.

It support open loop low-speed operation.

Multi-category trouble handling, detailed record of trouble information.

Multi-level clipher function enhances profetional operation.

Composite European low voltage directive (LVD) and EMC directive stipulations, it passes

CE Certification and satisfies IEC/EN 61800-3 Standard

MRL Controller and MR controller

Features of product series

- ◆ Streamline sturctural design.
- ◆ Double 32-digit processing chip
- ◆ Synchronous and asynchronous integration
- ◆ Current loop parameter self-tuning, comfortable travel, debugging-free, convenient operation.
- ◆ Automatic production of N-curve, automatic cognition of super short floor.
- ◆ Syncheronus machine angle, free-sefl-tuning
- ◆ Multi category trouble
- ◆ Chines charector liquid crystal operator



MR CONTROLLER

MRL controller and MR controller Serial matching coder category

- ◆ SIN/COS coder
- ◆ UVW coder
- ◆ ENDAT Interface coder
- ◆ ABZ incremental type coder



MRL CONTROLLER

SPLIT TYPE SYSTEMS (OPTIONAL)

Unique inverter control system, with ICB (Insulate-gate Bipolar Transistor) Module and Power Semiconductor module to realize low power consumption and high integration. CPU storage capacity is 32-bit microprocessor.

ERIGO LIFT's inverter technology (i)

- ✓ With high landing accuracy and confort;
FG feedback control card will carry out PG vector control, which can run with a high
 - performance and accuracy
 - speed control range 1:1200
 - speed control precision $\pm 0.02\%$
 - speed reaction 40Hz

ERIGO LIFT's inverter technology (ii)

- ✓ Improved comfort during low -speed running with the combination of ERIGO LIFT's original digital automatic volatage regulation (AVR) and dynamic torque vector, the speed ripple during low-speed running can be reduced to less than 1/2 comparing to forgone products.

ERIGO LIFT's inverter technology (iii)

- ✓ Control performance stabilization With a new on-line self-tuning system, the changes of motor characteristics can be tested frequently, there fore realizing the high-accuracy speed control.
- ✓ Data Communication method will be used between control panel (32bit) and call button in each hall, landing indicator as well as the hall lantern.
- ✓ According to the data content and amount plural protocol will be adopted separately to realize the high speed and large capacity of data communication (10 time thand traditional products) There for the ability of monitoring the elevator running conditions and commands will be improved greatly in the aspect of speed, precition and reliability.
- ✓ The communication method will adopt the industrial advanced BUSLINE HALL BUS, CAR BUS systems are equipped with strong and interference and extention abilities.



FRENIC INVERTER



ERIGO CONTROLLER

Traditional elevator commands are transpmited to each device from the control panel in the machine room through the travelling cable and ERIGO LIFT (Distributed control system) can better elaborate its safety advantages. The system can strictly execute all functions according to the recieved commands, therefore the elevator safety can be absolutely guaranteed.

PERMANENT MANAGEMENT SYNCHRONOUS GEARLESS TRACTION MACHINE

The outer rotor of the traction machine

Outer rotor traction machine to out side of the motor body is a rotary body, with save space, appearance and compact design, small vibration amplitude, low noise operationk, good heat dissipation effect, long lite charecteristics, external rotor motor without the need for additional equipment, suitable for mounted on the impelled and other devices.



The inner motor traction machine

Inside the rotor traction machine with motor in the middle of the core body is a rotary body, the rigidity of the motor is strong, body is easy to fix, Kv value is high, has the advantages of small torque, the characteristic of high speed, compared with traditional external motor rotor host, has the advantage of higher performance.



Heavy energy saving



Space saving



No need to replace the oil.
No oil pollution



Low noise
the quiet natural

FLAT-BELT MACHINE



Effective and energy-saving host

Erigo applies rare earth permanent magnet synchronous and gear-less host (effective PM permanent magnet synchronous and gear-less host) without carbon brush, nor charcoal ash, internal disc brake brings about the more secure and reliable operation. Under same load, its bulk is 70% smaller than the traditional host. Permanent sealing bearing needs no grease lubrication. It ensures clean machine room. Composite steel belt with higher frictional coefficient effectively transfer the host motives in to the elevator car it enhances the travel efficiency, it is more energy saving than the traditional geared host.

- Environmentally friendly
- Comfortable and smooth
- Quiet performance
- Aves space configuration

Composite steel belt

ERIGO elevator applies the more durable, energy saving and environment protection composite steel belt. It matches with multiple leading international technologies such as the effective energy-saving host, variable frequency door protection device etc. It moves vertical transport elevator development on to a new height and stage.

Compared with the traditional wire rope

1. Polyurethane (PU) material layer lubrication.
2. Its life is two or three times higher than that of traditional wire rope
3. It is more bendable, it increases the contact area with drive wheel. It is more effective and energy saving



Composite steel belt



Traditional wire rope

PASSENGER ELAVATOR

Loading 450kg-2500kg Speed 1.0m/s-8m/s

VILLA ELEVATOR

Loading 200kg-450kg Speed 0.4m/s-1.0m/s

OBSERVATION ELEVATOR

Loading 450kg-2500kg Speed 1.0m/s-8m/s

BED ELEVATOR

Loading 800kg-2000kg Speed 1.0m/s-8m/s

FREIGHT ELEVATOR

Loading 500kg-7000kg Speed 0,5m/s-1.0m/s

DUMBWAITER

Loading 50kg-250kg Speed 0.3m/s

HYDRAULIC ELEVATOR

Loading 320kg-7000kg Speed 0.3-0.63m/s

CAR ELEVATOR

Loading 3000kg-5000kg Speed 0.25-0.5m/s

ERIGO

Ceiling : Hairline stainless steel frame, acrylic top panel

Car wall : Hairline mirror etching

Floor : PVC(standard) marble(optional)



Rear



Front

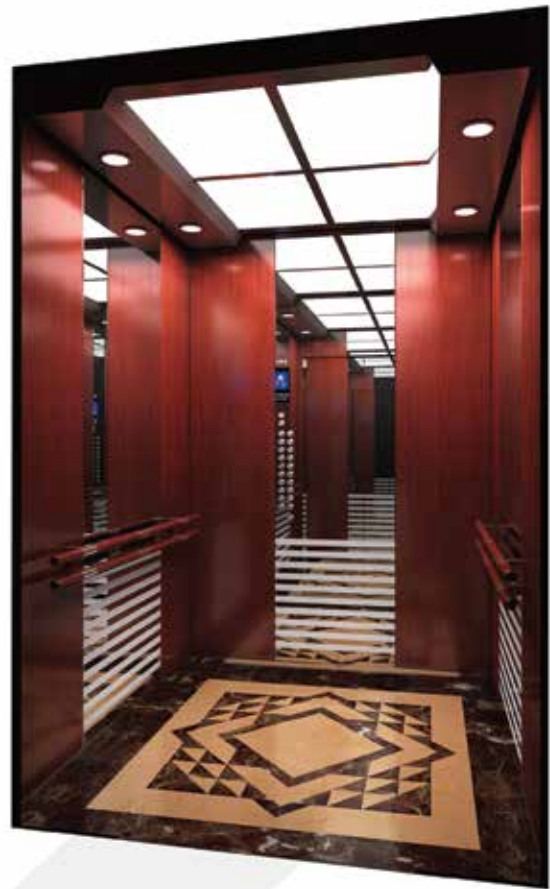


ERIGO

Ceiling : Hairline stainless steel frame, acrylic top panel

Car wall : Hairline mirror etching

Floor : PVC(standard) marble(optional)

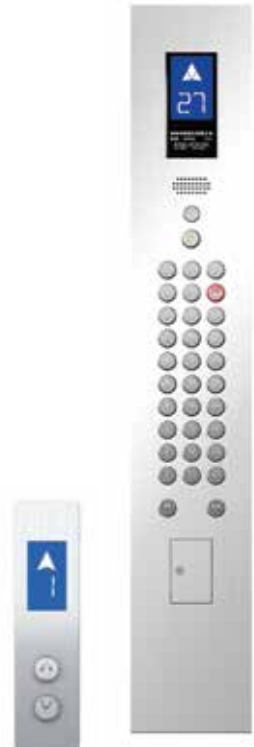


ERIGO F SERIES

Ceiling : Hairline stainless steel frame acrylic top panel

Car wall : Hairline mirror etching

Floor : PVC(standard) marble(optional)



ERIGO L SERIES

Ceiling : Gold titanium mirror titanium frame with LED light

Car wall : Gold titanium mirror titanium

Floor : PVC(standard) marble (optional)



OPTIONAL



PASSENGER ELEVATOR CAR

CAR DECORATION



RJ011



RJ013



RJ016



RJ018



PASSENGER ELEVATOR CAR

CAR DECORATION



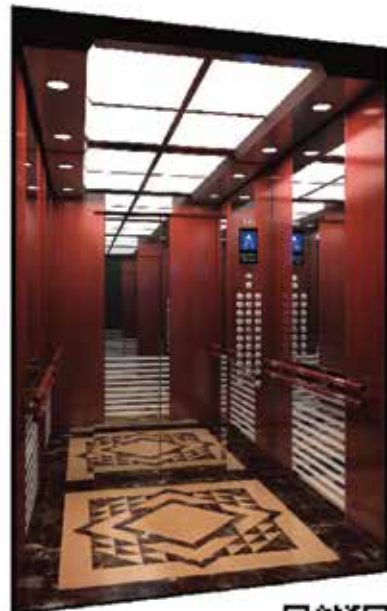
RJ031



RJ033



RJ034



RJ035



PASSENGER ELEVATOR CAR

CAR DECORATION



RJ041



RJ042



RJ043



RJ045



PASSENGER ELEVATOR CAR

OPTIONAL CABIN



ERIGO-CA023



ERIGO-CA024



ERIGO-CA025



ERIGO-CA026



ERIGO-CA027



ERIGO-CA028

PASSENGER ELEVATOR CAR

OPTIONAL CABIN



PASSENGER ELEVATOR CAR

OPTIONAL CABIN



ELEVATOR CAR DECORATION



KGS041
 Ceiling: Titanium mirror curve, White transparent board
 Cabin wall: Titanium, Mirror, Etching, Hairline
 Handrail: Triple 5s titanium tube combination
 Floor: PVC/Marble



KGS042
 Ceiling: Wide arched transparent board, Lighting decoration
 Cabin wall: Titanium, Mirror, Etching, Hairline
 Handrail: Combination of log and Titanium
 Floor: PVC/Marble



KGS043
 Ceiling: Mirror 5s frame, Acrylic dome board, Lighting decoration
 Cabin wall: Combination of titanium etching and hairline
 Handrail: Titanium 5s tube
 Floor: PVC/Marble



KGS044
 Ceiling: U painted floor in mid-LED light, Mirror lighting decoration
 of hollow out board on both sides
 Cabin wall: Mirror, Etching, Hairline
 Floor: PVC/Marble

ELEVATOR CAR DECORATION



KGS045
 Ceiling:Image vault in mid, Ss floor,LED lighting decoration on both sides
 Cabin wall:Mirror,Etching,Hairline,Notch golden
 Handrail:Ss flat handrail
 Floor:PVC/Marble



KGS046
 Ceiling:In the steel plate coating with LED lights on the floor, Vaulted organic transparent board in mid, Lighting decoration
 Cabin wall:Mirror,Etching,Hairline,Notch golden
 Handrail:Ss flat handrail
 Floor:PVC/Marble



KGS047
 Ceiling:Multi-ply reflection,Waist shape light hole all round,Organic lamp
 Cabin wall:Mirror,Etching,Hairline,Notch golden
 Handrail:Ss flat handrail
 Floor:PVC/Marble



KGS048
 Ceiling:Image vault in mid,Ss floor,LED soft lighting decoration on both sides
 Cabin wall:Mirror,Etching,Titanium plated
 Handrail:Organic column handrail
 Floor:PVC/Marble

ERIGO

Ceiling : Gold titanium mirror titanium frame with LED light

Car wall : Gold titanium mirror titanium

Floor : PVC(standard) marble (optional)



0 PIT

Four advantages of humanity

Environmental protection and energy saving: 220V or 180V voltage, power consumption is equivalent to a refrigerator Product features: no construction of the road, beautiful, comfortable Style appearance: suitable for all kinds of decoration style Applicable place: different style, different structure of the villa

Erigo villa lift characteristics

Professional host: safety, high efficiency, energy saving, environmental protection, ultra quiet Unique car suspension system: maximum utilization of the well Car and heavy all solid Rail: safe, silent Power cut automatic leveling: safety and worry free Digital computer control system: safety, comfort and stability WVF drive technology: smooth, comfortable Mute guide system: environmental protection, comfortable, quiet Frequency conversion and high efficiency opening and closing system: stable and efficient Efficient space design: it can be applied to the room, the room well road Ultra low end pit size requirements, does not increase construction costs

STEEL STRUCTURE

Steel structure





-KPS001

Car cover: Titanium gold, Acrylic round cover
Observation wall: Laminated glass x3 (6+6)
Decoration roof: Painted steel plate, Acrylic lamp act the role ofing
Cabin wall: Titanium etching, Titanium mirror
Handrail: Ss titanium tube
Floor: PVC/Marble

-KPS002

Car cover: Titanium, Acrylic round cover
Observation wall: Laminated glass x3 (6+6)
Decoration roof: Painted Steel plate, Acrylic lamp
Cabin wall: Titanium etching, titanium mirror
Handrail: Ss titanium pipe
Floor: PVC/Marble





-KPS003

Car cover: Stairs is circular plate of the lacquer that bake and decorative lamp
Observation wall: Safety laminated glass x3 (6+6)
Decoration roof: Circular glass shape and the back of the LED lights
Cabin wall: Ss titanium hairline tube
Handrail: Ss single pipe handrail
Floor: PVC/Marble

-KPS004

Car cover: Painted Steel plate pressure tank, Triangle lamp act the role ofing
Observation wall: Safety laminated glass x3 (6+6)
Decoration roof: Painted Steel plate frame, Round white acrylic, LED lights
Cabin wall: Ss hairline finished
Handrail: Ss single pipe handrail
Floor: PVC/Marble





-KPS005

Car cover: Painted Steel plate with acrylic decoration bar
Observation wall: Safety laminated glass x3 (6+6)
Decoration roof: Image plate on both sides, LED lights
Cabin wall: Ss hairline finished
Handrail: Ss double tube
Floor: PVC/Marble

-KPS006

Car cover: Steel plate, Spraying and chandeliers
Observation wall: Safety laminated glass x3 (6+6)
Decoration roof: Multi-layer reflective plate, LED lights
Cabin wall: Mirror, Etching, Ss hairline finish
Handrail: Ss double tube
Floor: PVC/Marble





-KPS007

Car cover: Ss hairline finished,ribbing
Observation wall:Safety laminated glass x3 (6+6)
Decoration roof:Mirror Ss,Acrylic lamp
Cabin wall:Ss hairline finished
Handrail:Ss double tube
Floor:PVC/Marble

-KPS008

Car cover:Ss hairline finished,Trim strip
Observation wall:Safety laminated glass x3 (6+6)
Decoration roof:Ss Hairline finished,Milky white
piece,Crystal lamp shade
Cabin wall:Ss hairline finished
Handrail:Ss three tubes
Floor:PVC/Marble





-KPS009

Car cover:Acrylic,Ss Coaming and chandeliers
Observation wall:Safety laminated glass x3 (6+6)
Decoration roof:Central image and LED lights
Cabin wall:Mirror,Etching,Hairline
Handrail:Ss double tube
Floor:PVC/Marble

-KPS010

Car cover:Semicircle acrylic cover coaming Ss
Observation wall:Safety laminated glass x3 (6+6)
Decoration roof:Multi-layer reflective plate,LED lights
Cabin wall:Mirror,Etching,Hairline
Handrail:Ss thribble
Floor:PVC/Marble





-KPS011

Car cover:Painted Steel plate,Acrylic cover
Observation wall:Safety laminated glass x3 (6+6)
Decoration roof:Painted Steel plate,Acrylic roof,Crystal lamp
Cabin wall:Ss hairline finished
Handrail:Ss single pipe handrail
Floor:PVC/Marble

-KPS012

Car cover:Steel plate coating titanium
pipe,Organic plate
Observation wall:Safety laminated glass x3 (6+6)
Decoration roof:Circular glass,LED lights in back
Cabin wall:Hairline,Etching
Handrail:Ss double tube
Floor:PVC/Marble





-KPS013

Car cover:Steel plate spray bar design
Observation wall:Safety laminated glass x3 (6+6)
Decoration roof:Image plate,LED lights on both sides
Cabin wall:Ss hairline finished
Handrail:Ss double tube
Floor:PVC/Marble

-KPS014

Car cover:Ss hairline finished
Observation wall:Laminated glass x3 (6+6)
Decoration roof: White dome light and LED lights
Cabin wall:Mirror etching on surface
Handrail:Ss thribble
Floor:PVC/Marble





-KPS015

Car cover:Painted Steel plate
Observation wall:Safety laminated glass x3 (6+6)
Decoration roof:Painted Steel plate
Cabin wall:Ss hairline finished
Handrail:Mirror Ss pipe
Floor:PVC/Marble

-KPS016

Car cover:Painted Steel plate , Ss hairline finished,Lamp decorations
Observation wall:Laminated glass x3 (5+5)
Decoration roof:Hairline Ss finished,Arylic roof,LED lights
Cabin wall:Ss hairline finished
Handrail:Ss single pipe handrail
Floor:PVC/Marble





-KPS017

Car cover:Steel plate coated,LED lights
Observation wall:Safety laminated glassx3 (6+6)
Decoration roof:Steel plate coated,Acrylic light decoration
Cabin wall:Ss hairline finished
Handrail:Ss single pipe handrail
Floor:PVC/Marble

-KPS018

Car cover:Steel plate paint and Ss with acrylic
Observation wall:Safety laminated glassx3(6+6)
Decoration roof:LED lights and ceiling lamp
Cabin wall: Ss hairline plate
Handrail:Ss single pipe handrail
Floor:PVC/Marble





-KPS019

Car cover:Steel plate paint with light decoration
Observation wall:Safety laminated glass1(5+5)
Decoration roof:Steel plate coated,LED decoration
Cabin wall:Safety laminated glass
Handrail:Ss hairline plate
Floor:PVC/Marble

-KPS020

Car cover:Steel plate painted with decoration light
Observation wall:Safety laminated glassx1(5+5)
Decoration roof:Steel plate coated,LED decoration
Cabin wall:Safety laminated glass
Handrail:Ss hairline plate
Floor:PVC/Marble





-KPS021

Car cover:Steel plate coated, Acrylic decoration bar
Observation wall:Safety laminated glassx3(6+6)
Decoration roof:Steel plate coated,Acrylic light
Cabin wall:Ss hairline finished
Handrail:Ss single pipe handrail
Floor:PVC/Marble

-KPS022

Car cover:Acrylic
Observation wall:180° safety laminated glass(6+6)
Decoration roof:Steel plate coated frame,Acrylic
Cabin wall:Ss hairline finished
Handrail:Ss single pipe handrail
Floor:PVC/Marble



OPERATION PANNEL



ERIGO-COP07
(Hairline Stainless Steel)



ERIGO-LOP07
(Standard)



ERIGO-LOP07A
(Optional)



ERIGO-COP08
(Hairline stainless steel)



ERIGO-LOP08
(Standard)



ERIGO-LOP08A
(Optional)



BUTTON OPTIONAL



ERIGO-BU01



ERIGO-BU02



ERIGO-BU03



ERIGO-BU04



ERIGO-BU05



ERIGO-BU06

OPERATION PANEL



ERIGO-COP09
(Black titanium)



ERIGO-LOP09
(Standard)



ERIGO-LOP09A
(Optional)



ERIGO-COP10
(Hairline stainless steel)



ERIGO-LOP10
(Standard)



ERIGO-LOP08A
(Optional)

BUTTON OPTIONAL



ERIGO-BU07



ERIGO-BU08



ERIGO-BU09



ERIGO-BU10



ERIGO-BU11



ERIGO-BU12

OPERATION PANEL



ERIGO-COP11
Black titanium



ERIGO-LOP11
(Standard)



ERIGO-LOP11A
(Optional)



ERIGO-COP12
Hairline stainless steel
(Made in Italy)



ERIGO-LOP12
(Standard)



ERIGO-LOP12A
(Optional)

BUTTON OPTIONAL



ERIGO-BU13



ERIGO-BU14



ERIGO-BU15



ERIGO-BU16



ERIGO-BU17



ERIGO-BU18



ERIGO-BU19



ERIGO-BU20



ERIGO-BU21



ERIGO-BU22

LANDING DOOR SERIES



ERIGO-DOOR01
(Hairline Stainless Steel)



ERIGO-DOOR02
(Mirror Stainless Steel)



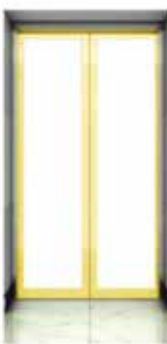
ERIGO-DOOR03
(Titanium)



ERIGO-DOOR04
(Rose Gold)



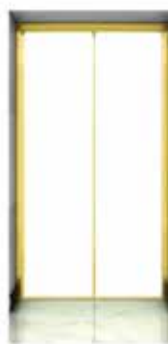
ERIGO-DOOR05
(Glass Door)



ERIGO-DOOR06
(Glass Door)



ERIGO-DOOR07
(Glass Door)



ERIGO-DOOR08
(Glass Door)



ERIGO-DOOR09
(Etching Mirror)



ERIGO-DOOR10
(Etching Mirror)



ERIGO-DOOR11
(Etching Mirror)



ERIGO-DOOR12
(Etching Mirror)

LANDING DOOR SERIES



ERIGO-DOOR13
(Etching Mirror)



ERIGO-DOOR14
(Etching Mirror)



ERIGO-DOOR15
(Etching Mirror)



ERIGO-DOOR16
(Etching Mirror)



ERIGO-DOOR17
(Etching Mirror)



ERIGO-DOOR18
(Etching Mirror)



ERIGO-DOOR19
(Etching Mirror)



ERIGO-DOOR20
(Etching Mirror)

DOOR OPENING MODE

Diverse landing doors suit multiple building requirements



Side opening



2-panels center opening



Center opening double-
folded type



3-folded center
opening type

ONE - STAND CEILING

ERIGO-CE001
Intergrated ceiling



ERIGO-CE002
Intergrated ceiling



ERIGO-CE003
Intergrated ceiling



ERIGO-CE004
Intergrated ceiling



ERIGO-CE005
Intergrated ceiling



ERIGO-CE006
Intergrated ceiling



CEILING SERIES



ERIGO-CE011



ERIGO-CE012



ERIGO-CE013



ERIGO-CE014



ERIGO-CE015



ERIGO-CE016



ERIGO-CE017



ERIGO-CE018



ERIGO-CE019



ERIGO-CE020



ERIGO-CE021



ERIGO-CE022



ERIGO-CE023



ERIGO-CE024



ERIGO-CE025



ERIGO-CE026



ERIGO-CE027



ERIGO-CE028

FLOOR SERIES



ERIGO-FL05



ERIGO-FL06



ERIGO-FL07



ERIGO-FL08



FUJI-FL09



FUJI-FL10



FUJI-FL11



FUJI-FL12



ERIGO-FL13



ERIGO-FL14



ERIGO-FL15



ERIGO-FL16



ERIGO-FL17



ERIGO-FL18



ERIGO-FL19



ERIGO-FL20

HANDRAIL SERIES



ERIGO-HA01



ERIGO-HA02



ERIGO-HA03



ERIGO-HA04



ERIGO-HA05



ERIGO-HA06



ERIGO-HA08



ERIGO-HA09

FRIEGHT ELEVATOR



Smooth and proper goods transport

ERIGO freight elevator combines with top technologies such as elevator engineering technology etc. Its powerful driving system, highly reinforced mechanical structure design can contain large amount of goods. It can always be operated in various harsh environments. It features as effective, reliable, firm, durable, accurate leveling and so forth. It is widely applicable for the factory, warehouse, shopping center etc.



HYDRAULIC ELEVATOR

The flexible setting of the machine room position

needs no top machine room Machine room can be set within ten meters in the surroundings of the lift well. It more accords with the individual design requirements of the constructions.

The highest safe and reliable properties

Apart from the safety protection device of traction type lift, it additionally adds the multiple hydraulic loop protection systems such as safety valve, pipe repture valve, pressure switch valve etc.



CAR ELEVATOR

It deducts a wonderful and extraordinary travel experience

ERIGO car elevator introduces the internationally well-developed car elevation technology. It has been developed and manufactured through absorption, transformation and elevation. Advanced technology ensures that it eliminates shaking car caused by noise and burdened traction system load due to uneven force to elevator car. It optimizes the characteristics of this product series.



DUMBWAITER

Multi-dimensional space is flexible and changeable

ERIGO dumbwaiter elevator provides small freight elevators in various buildings with the prompt, economical and convenient vertical transport. It greatly saves time and labor resources. It is widely applicable for delivering food and drinks, dining ware, daily commodities etc. in the hotel, restaurant, bank, hospital and so on.



HOSPITAL ELEVATOR

Emergency self-leveling rescue system in power failure

ERIGO hospital elevator applies advanced emergency self-rescue system. It sets emergency leveling device in power failure. If normal power supply disconnects, charming batteries automatically offers elevator mains. It promotes smooth elevator operation. It slowly and smoothly reaches nearest landing and opens the door. It effectively prevents elevator from trapping passengers. It thus guarantees passengers' travel safety.



OPTIONAL FUNCTION



Automatic rescue device(ARD)

When power is off, this device supplies power to elevator, elevator runs to the nearest floor, open its door and evacuates the passengers.



IC Card control

All (part) of the floors need entry approval, only with IC card can run the elevator



Remote control

By wire or wireless communication module, system performs real-time monitoring of elevator running state.



Wide Jamb

We customize the size of jamb according to wall thickness for customers

OPTIONAL FUNCTION



Earth quake

Pre-inspect the earth quake when it comes the device send the signal to the inverter and shows the error codes



Energy feedback system

Within the device installed, it is going to save the 20%-30% consumption of electricity power



Voltage regulator

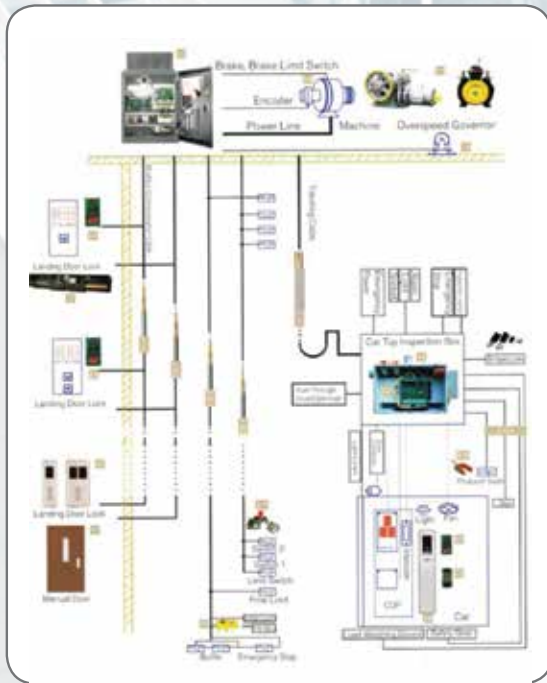
An automatic voltage regulator ensured a constant output from the generator



Fire door

Fire proof function doors with optional fire rejection time: 1 hours 2 hours WITTUR IS ERIGO qualified supplier.

LIFT MODERNIZATION FOR OLD BUILDINGS



If maintained properly and in normal use situation, the average service life of elevator is 15 years, with the elevator service time counting, both the mechanical and electrical parts are aging and less functional consequently, the safety, the safety of elevator is degrading and potential risk is getting high. ERIGO elevator has rich and leading experience in lift modernization field, especially in the control and drive system. based on our past experience and market demand, we have prepared several integrated modernization solutions to our customers together with economic and qualified spare parts

ERIGO working together with its clients develops customized solutions for the modernization of the older elevators combining the cost effectiveness with the highest quality outcome.

The Erigo modernization solutions cover:

- Comfortable transport with emphasis on the passengers' safety
- Energy savings
- High performance levels
- Superb compatibility
- Minimization of the maintenance costs
- Modern design



INDOOR ESCALATOR

Advanced scientific research technology finds the excellent quality

Erigo escalator surpasses your desires! It is widely applicable for large passenger flow areas such as shopping center, supermarket, subway, airport etc. It adds a bright flowing scene for your building.

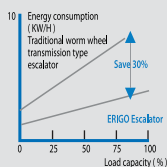
lication of VVVF variable frequency technology, man-machine ergonomics research fruit and advanced manufacture technology bring about safe, perfect, comfortable FUJI escalators. Meanwhile, users save more energy with more convenient repair.



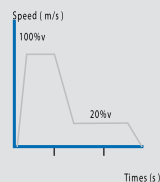
Effective Drive, Variable Frequency Energy-saving

High precision and efficiency helical gear decelerator brings about higher efficiency than that of traditional worm-gear decelerator. It fully and effectively utilizes energy.

During variable frequency operation, it has multiple testing modes to passenger flow. It automatically stops when nobody uses elevator. It avoids invalid operation. It saves power.



Efficiency comparison conceptual diagram between helical gear decelerator and worm wheel sub-decelerator



Variable frequency specification running conceptual diagram

OUTDOOR ESCALATOR



1. Of all standard parts by Dacromet processing
2. Galvanized parts using galvanized process, the thickness of the galvanized layer is not less than 12 μ m, the ladder rail assembly with the surface of galvanized, thickness of not less than 12 μ m.
3. Truss weld and angle to remove the surface oxide skin and rust, hot dip galvanized layer thickness and truss, not less than 80 MM.
4. The truss bottom open drain hole, room is provided with a water level monitoring switch, when the switch to monitor the water level in the tank beyond the scope of the cordon escalators, stop running, discharged after the recovery operation.
5. Wheel end bearing with waterproof, waterproof 204-2RS/GB279-85, both sides of the bearing coated MoS2 grease.
6. The step chain chain outdoors type phosphating, surface coating thickness not less than 12 μ m, main tyre waterproof retainer ring, waterproof type on both sides of the bearing coated fluidization molybdenum lithium grease.
7. Outdoor handrail with black belt attached (waterproof, sunscreen, heat resistant, cold resistant)
8. Support rollers with waterproof bearings bearings 6204-2RS/GB/T276-94 bearings coated on both sides of waterproof grease (MoS2 grease)
9. Control cabinet shell waterproof design: IP54 protection grade; bell control cabinet above the plug-in outside of the installation of the waterproof cover. The rest (cables, safety switches, etc.): protection class IP55.
10. Control cabinet to install leakage protection device, with leakage, overload, short circuit protection function.

6 PERFORMANCE UP-GRADING



1

It has the more solid and thick angle steel truss. It still keeps stable running under heavy loads



2

Special-purpose host matches with effective reduction gearbox it offers the better motives source



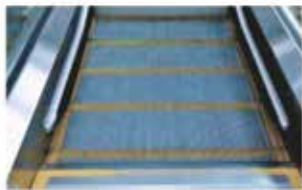
3

Special drive parts and V-shaped handrail are more effective, smooth, secure, reliable in drive and operation



4

Aluminum alloy step tread gets the better bearing capacity



5

4 horizontal steps enlarges buffer distance in travel. It is more human-centered in equipment, craft and technology



6

Dozens of protections, outer cover plates, emergency stop switches every 20 meters, more perfect safety warranty system.

OPTIONAL FUNCTION



EHC hand strap



Siemens gearbox



Cladding



1. Handrail is strong in breaking strength. It is firm and durable.
2. It applies flame-retardant materials for making. In fire disaster, it prevents from fire extension.
3. It has static inhibitor to prevent from static electricity.
4. Optional multi-color plans can be custom-made for your individually attractive outlines



Guardrail glass color colorless and transparent (Standard)



Deep gray



Bronze



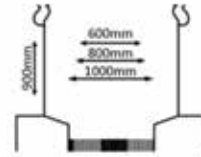
Yellow

OPTIONAL FUNCTION



Fault Display

When some defect takes place the trouble code will be displayed in the defect screen, it ensures the effective and accurate trouble position within the shortest time possible, in this way it greatly enhances the repair and maintenance efficiency,



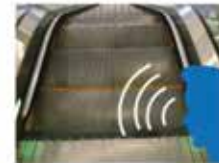
Balustrade height

(1000mm is standard specification)



skirt-board lighting

Two sides led lighting lamp with the clear effect on the evening of step running.



Voice HMI system

When installed in the entrance for passengers the voice prompts to take precautions.



Comb Lighting

Lighting was installed near the apron panel beside the comb plate, to provide lighting for the steps and the comb plate to facilitate passengers safe ride



Running direction indication

The running direction and forbidden display mark have been placed in the inlet and outlet of the handrail the obvious running of forbidden instruction ensures the safe riding of the passengers with great ease.



Aluminum alloy white light band



Aluminum alloy floor

OPTIONAL FUNCTION

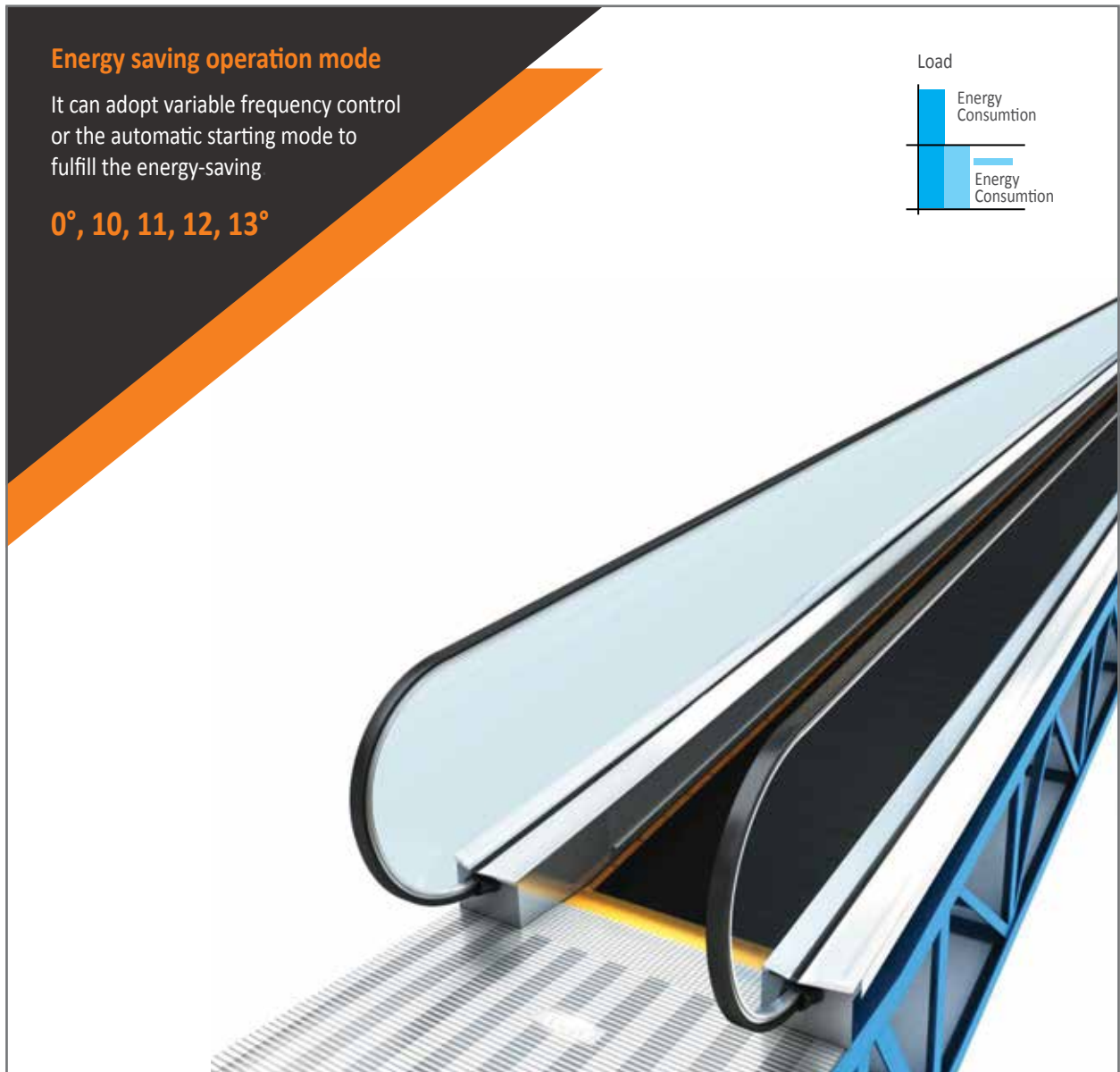
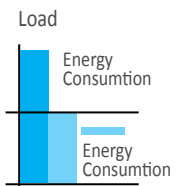
Popular outline brings about better travel experience

FUJI moving walk satisfies the transport requirement of large passenger flow in public traffic and transport areas such as the colorful modern city, large-size supermarket, public building, airport, exhibition center, transport hub etc. because of its own characteristics. It meets long-distance walk. People feel as easily as walking on firm earth while carrying luggage cart, baby's cart, the vehicle for the disabled in moving walk. It is greatly convenient for the people's outing and shopping. It becomes first-choice solution plan in large-size supermarket, airport, exhibition center, transport change-over station and so on because of its prompt, convenient and pleasant travel requirements.

Energy saving operation mode

It can adopt variable frequency control or the automatic starting mode to fulfill the energy-saving

0°, 10°, 11°, 12°, 13°



CAR PARKING SYSTEM

Parking in the form of construction divided into independent of the type and built two, independent parking construction for underground Plaza and existing buildings fill to build parking facilities, planning and construction should take note of the surrounding environment, in conditions allow integration, available external company or commonweal advertisement layout, improve economic efficiency.

Built-in stereo garage is suitable for synchronized planning and construction of new buildings, parking equipment attached no effect of regional environmental planning and architectural eyesore in the building. The development of modern parking industry has a certain scale, and actively expand the accessibility of parking facilities, to provide a variety of services for the community. In some parking facilities planning and construction, construction machinery parking facilities as the center, give full consideration to the the various needs of the surrounding environment, topography, service groups, the completion of the regional service center parking facilities, development of comprehensive benefits. Such as the focus of building parking, car wash, car beauty and car repair center.

PCS RH Vertical lifting mechanical parking system

This system is of a high space utilization, which provide 5-7 layers of parking lots and fully utilize the above and underground space, with advantages of short waiting and low energy consumption.



PJS-RH Two-storey home-use parking system



Postposition cantilever sort

Rear cantilever structure, hydraulic drive.

Mid vertical column type

Vertical column is placed in the middle to improve the encountered force of the structural elements. Chain or ball screw drive.

Four vertical columns type

The stable frame structure encounters even force. Chain drive.



PXD-RH Fully automatic aisle stacking parking system

Aisle-stacking parking system mainly makes horizontal movement through intellectual carrier (stacker) along the aisle. Meanwhile the carrier sends the car beside the designated position, then to the parking space (or take the car from parking space) according to the parking position of access car. Aisle-stacking parking system is fit for 2-8 deck parking.

Car entry / exit setting: Entry / exit can be either at the ground floor, i.e. initial floor of the construction or underground floor, Full use of the space: It can fully use the special space. The whole equipments only need one entry / exit. Highly intellectual: Fully intellectual automatic control is simple and prompt.

PCS RH Vertical lifting mechanical parking system

Vertical lifting mechanical parking system is also called tower type three-dimensional parking system. It transversely moves the car or carrier through the carrier elevation and traversing mechanism in the carrier to fulfill access of the car.

Full use of the space: Large capacity, small covering space, 40 to 50 cars can be parked within an area of 50 square meters, it is dozens of the times higher than in traditional ground parking system.

Intellectual and environmental protection: It applies AC variable frequency and speed governor, wire rope traction and drive mode with quick speed, low noise, little vibration, sound energy-saving and environmental protection.

Humane operation interface: It has the humane designs such as intellectual control, press button / touch screen / IC card operation system, voice / image prompt ect. With easy and convenient use. Easy and convenient operation: It has interal rotating disc. It needs no back off while entering into / exiting from the garage.

Good protection measures: Fully enclosed garage structure prevents from exposure to the sun, rain, theft and damage.



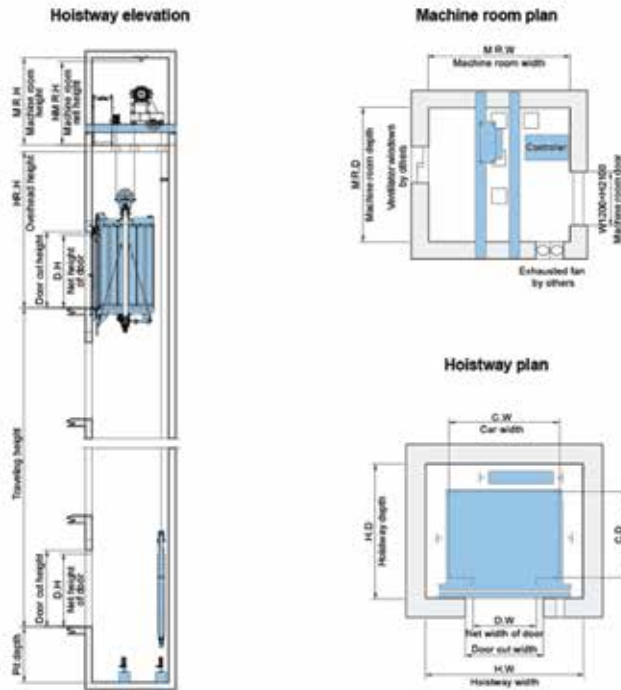
LIFT PLATFORM

Lift platform is a kind of multi-functional loading and unloading mechanical equipment widely used for aerial working operations and maintenance in factory automatic warehouse parking lot municipal administration, dock, construction, decoration, logistic electric, chemical industry, hotel gym industrial mine, enterprises and so on. It can also be used for painting and decoration, replacement of lights, electrical appliances, cleaning, the maintenance and installation of electrical power circuit, lightning, elevated pipes and so on. It can easily access in general gateways, corridors and elevators to work. It adopts two-phase power supply and infinitely variable speeds (CVT) to provide users with safe and convenient aerial working. Low noise, convenient and quick, an ideal aerial work equipment.



GPRS20 SMALL MACHINE ROOM ELEVATOR

Construction sketch



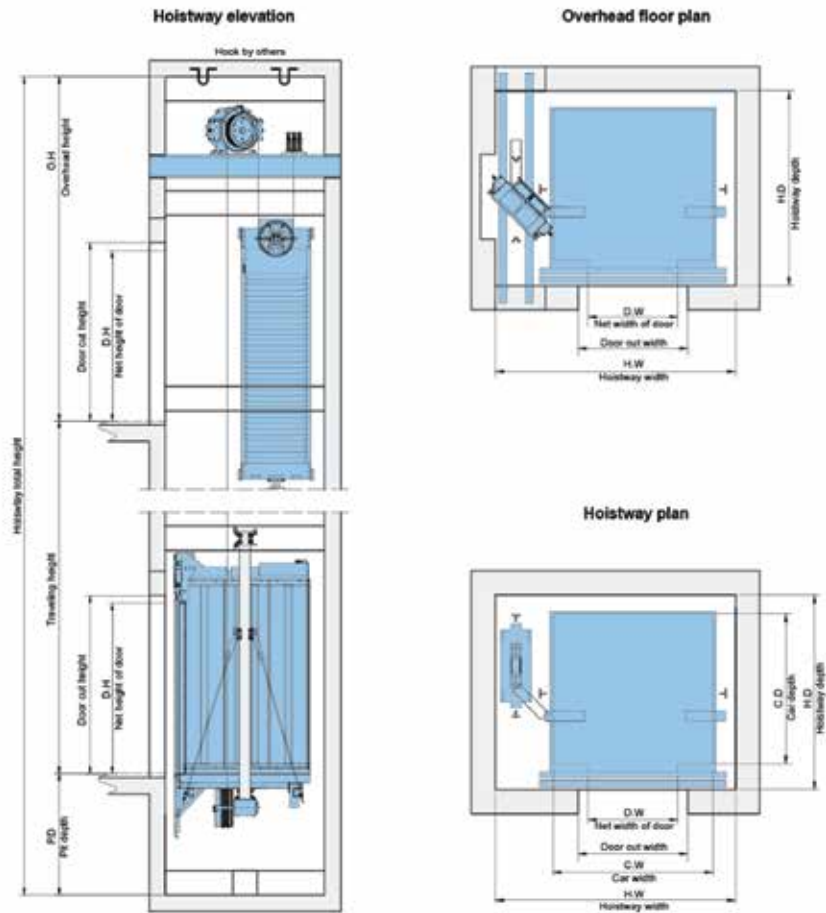
GRPS20 small machine room elevator specifications

Persons	Rated capacity (kg)	Rated speed (m/s)	Net size of car (mm) C.W x C.D	Net size of door (mm) D.W x D.H	Hoistway size (mm)			Machine room size (mm)		Max. travelling height (m)
					H.W x H.D	D.W	P.D	M.R.W x M.R.D	M.R.D	
8	630	1.0	1400x1100	800x2100	2000x1750	4100	1300	2000x1750	2300	45
		1.75				4300	1500			95
		2.0				4100	1350			45
10	800	1.0	1400x1350	800x2100	2000x2000	4200	1500	2000x2000	2300	120
		1.75				4400	1600			95
		2.0				4100	1700			45
13	1000	1.0	1800x1550	900x2100	2200x2150	4100	1350	2200x2150	2300	150
		1.75				4300	1500			95
		2.0				4400	1600			120
15	1160	1.0	1720x1500	1000x2100	2300x2150	4100	1700	2300x2150	2700	150
		1.75				4200	1350			95
		2.0				4300	1500			120
18	1250	1.0	1850x1400	1100x2100	2600x2050	4100	1350	2600x2050	2300	150
		1.75				4300	1500			95
		2.0				4400	1600			120
18	1350	1.0	1850x1550	1180x2100	2800x2200	4100	1350	2800x2200	2300	150
		1.75				4300	1500			95
		2.0				4400	1600			120
21	1600	1.0	1950x1750	1100x2100	2800x2400	4100	1350	2800x2400	2300	150
		1.75				4300	1500			95
		2.0				4400	1600			120
26	2000	1.0	2150x1950	1200x2100	2800x2800	4100	1700	2800x2800	2300	150
		1.75				4300	1500			95
		2.0				4400	1600			120

*For stretcher elevator

GPRS20 MACHINE ROOMLESS ELEVATOR

Construction sketch

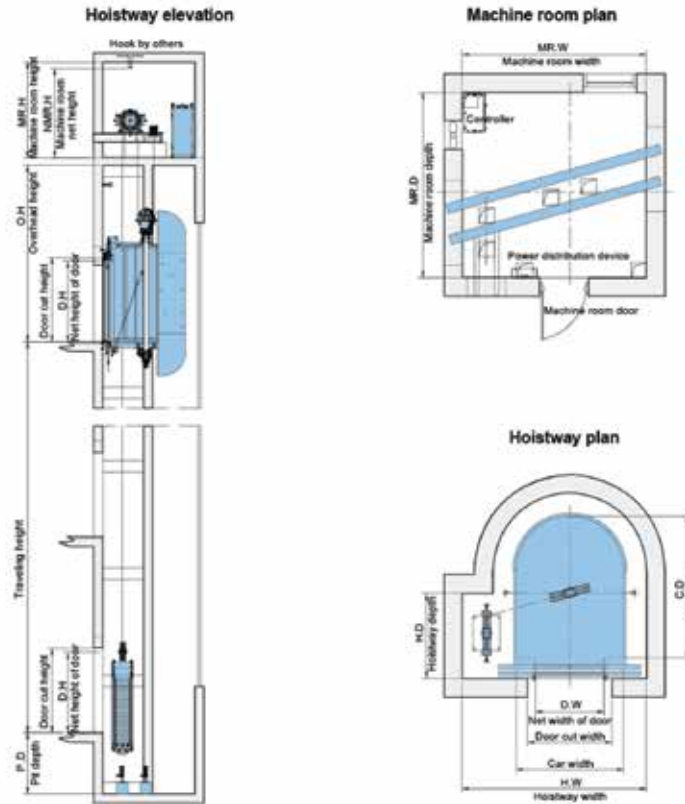


GRPN20 machine roomless elevator specifications

Persons	Rated capacity (kg)	Rated speed (m/s)	Net size of car (mm)	Net size of door (D.W x D.H) (mm)	Hoistway size (mm)			Max. travelling height (m)
			C.W x C.D	2P Central opening	H.W x H.D	O.H	P.D	
8	630	1.0	1400x1100	800x2100	2200x1700	4000	1600	45
		1.75				4100		60
10	800	1.0	1400x1350	800x2100	2200x1850	4000	1600	45
		1.75				4100		60
		2.0				4200		75
13	1000	1.0	1600x1500	900x2100	2400x1950	4000	1600	45
		1.75				4100		60
		2.0				4200		75
16	1250	1.0	1950x1400	1100x2100	2950x1850	4300	1600	45
		1.75				4400		60
		2.0				4500		75
18	1350	1.0	1950x1550	1100x2100	2950x2000	4300	1600	45
		1.75				4400		60
		2.0				4500		75
21	1600	1.0	1950x1750	1100x2100	2950x2200	4500	1600	45
		1.75				4600		60
		2.0				4700		75

GROS OBSERVATION ELEVATOR

Construction sketch



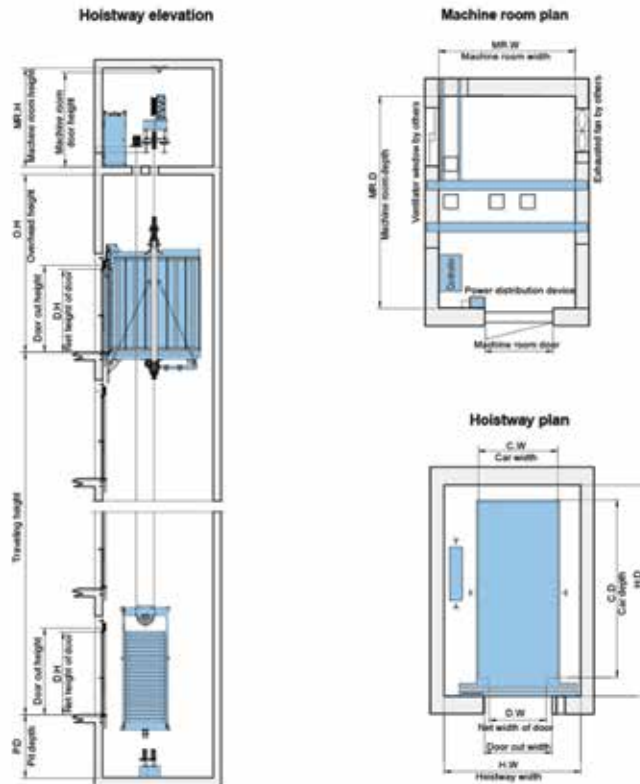
Note: the conceptual diagram takes the horse-hoof panorama lift as an example.

GROS observation elevator specifications

Persons	Total hoistway height (mm)	Total hoistway height (mm)	Net size of car (mm)		Hoistway size (mm)				Machine room size (mm)		Car shape	Min. travelling height (m)
			C.WxH.C.D.	3P' Center (mm)	H.WxH.D.	O.H.	P.D.	MR.WxMR.D.	MR.H			
8	630	1.0	1400x1100	800x2100	2200x1650	4100	1400	2200x1650	2500			45
		1.75				4300	1500					55
		1.0				4100	1400					45
10	800	1.75	1400x1350	800x2100	2200x1850	4300	1500	2200x1850	2500			95
		2.0				4400	1600					120
		2.5				4700	1700					150
13	1000	1.0	1800x1500	900x2100	2400x1950	4100	1400	2400x1950	2500			45
		1.75				4300	1500					95
		2.0				4400	1600					120
15	1250	2.5	1950x1400	1100x2100	2750x1900	4200	1400	2750x1900	2500			150
		1.0				4300	1500					45
		1.75				4400	1600					95
18	1350	2.0	1950x1550	1100x2100	2750x2000	4200	1400	2750x2000	2500			120
		1.0				4300	1500					45
		1.75				4400	1600					95
21	1600	2.5	1950x1750	1100x2100	2750x2200	4200	1400	2750x2200	2500			150
		1.0				4300	1500					45
		1.75				4400	1600					95
13	1000	2.0	1400x1850	900x2100	2400x1110	4100	1400	2400x2395	2500			120
		1.0				4300	1500					45
		1.75				4400	1600					95
10	800	2.5	1200x1850	800x2100	2200x1110	4100	1400	2200x2195	2500			120
		1.0				4300	1500					45
		1.75				4400	1600					95
13	1000	2.5	1400x1850	900x2100	2400x1110	4100	1400	2400x2395	2500			120
		1.0				4300	1500					45
		1.75				4400	1600					95
15	1150	2.0	1200x2100	1000x2100	2750x1060	4200	1400	2750x2700	2500			120
		1.0				4300	1500					45
		1.75				4400	1600					95

GRBS BED ELEVATOR

Construction sketch



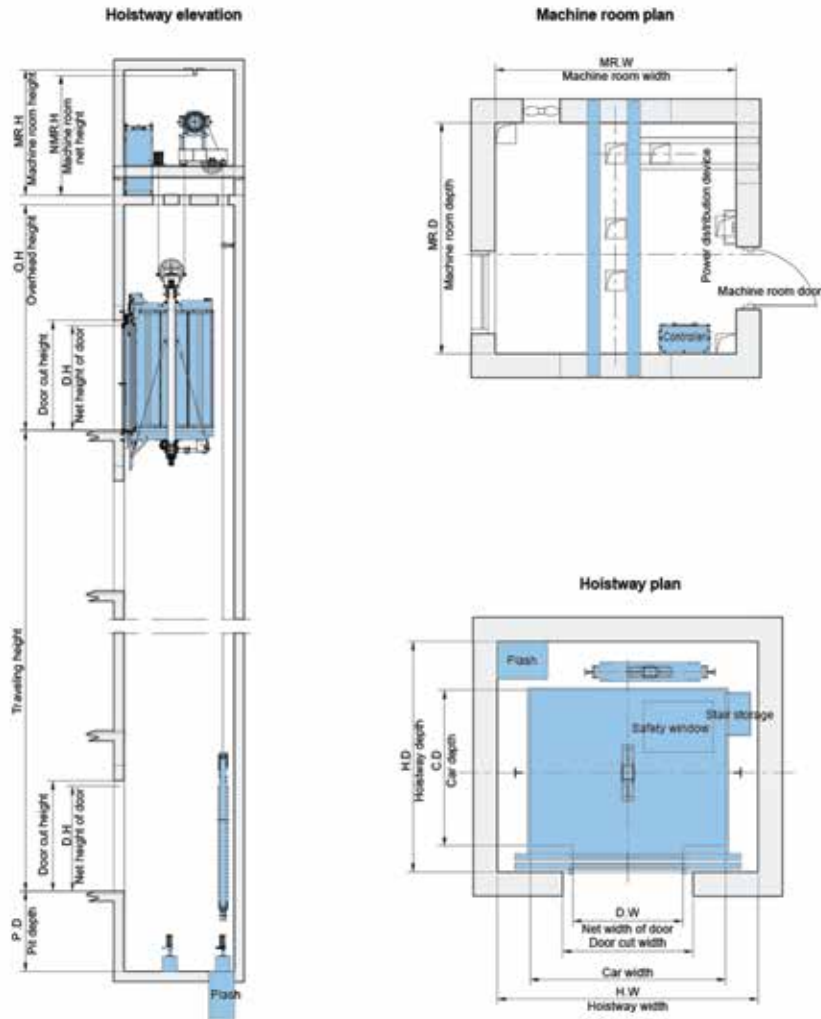
Note: The diagram shows two-panel center door bed lift. Please refer to the construction layout drawing for other detailed specifications of the bed lift.

GRBS bed elevator specifications

Parameter	Rated capacity (kg)	Rope speed (m/s)	Net size of car (mm)		Hoistway size (mm)			Machine room size (mm)		Max travelling height (m)
			C, W & C, D	W (mm)	Is W x H (D)	C, D	P, D	MR, W x MR, D	MR, H	
13	1000	1.0	1100x2100	1000x2100	2000x2600	4100	1300	2200x2600	2600	45
		1.75				4300	1500			95
		2.0				4400	1800			120
		2.5				4700	1700			150
		1.0				4200	1300			45
21	1600	1.0	1400x2400	1000x2100	2400x2800	4200	1300	2400x2800	2500	45
		1.75				4300	1500			95
		2.0				4400	1800			120
		2.5				4700	1700			150
		1.0				4200	1300			45
24	1800	1.0	1500x2600	1100x2100	2500x2900	4200	1300	2500x2900	2500	45
		1.75				4300	1500			95
		2.0				4400	1800			120
		2.5				4700	1700			150
		1.0				4200	1300			45
26	2000	1.0	1500x2700	1200x2100	2600x3100	4200	1300	2600x3100	2500	45
		1.75				4300	1500			95
		2.0				4400	1800			120
		2.5				4700	1700			150
		1.0				4200	1300			45
13	1000	1.0	1100x2100	1100x2100	2100x2600	4100	1300	2100x2600	2600	45
		1.75				4300	1500			95
		2.0				4400	1800			120
		2.5				4700	1700			150
		1.0				4200	1300			45
21	1600	1.0	1400x2400	1100x2100	2200x2600	4200	1300	2200x2600	2600	45
		1.75				4300	1500			95
		2.0				4400	1800			120
		2.5				4700	1700			150
		1.0				4200	1300			45
34	1800	1.0	1500x2600	1200x2100	2300x3000	4200	1300	2300x3000	2600	45
		1.75				4300	1500			95
		2.0				4400	1800			120
		2.5				4700	1700			150
		1.0				4200	1300			45
26	2000	1.0	1500x2700	1300x2100	2400x3200	4200	1300	2400x3200	2600	45
		1.75				4300	1500			95
		2.0				4400	1800			120
		2.5				4700	1700			150
		1.0				4200	1300			45

GRPS20F FIRE MAN ELEVATOR

Construction sketch



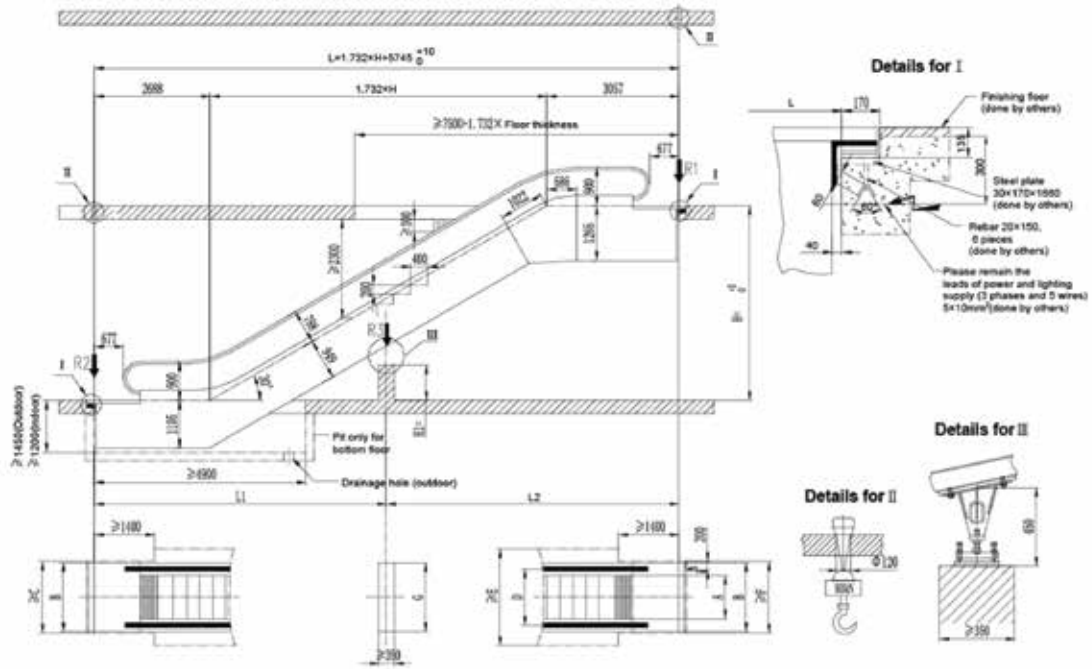
GRPS20F Fireman elevator specifications

Persons	Rated capacity (kg)	Rated speed (m/s)	Net size of car (mm) C,Wx C,D	Net size of door D,WxL,H (mm) JP, Central opening	Hoistway size (mm)			Max traveling height (m)
					H,WxL,D	O,H	P,D	
13	1000	1.0	1800x1600	800x2100	2260x2150	4200	1300	45
		1.75				4300	1500	60
		2.0				4400	1600	120
		2.5				4700	1700	180
		3.0				5000	2000	180
		3.0				5000	2000	180
18	1350	1.0	1950x1650	1100x2100	2650x2200	4200	1300	45
		1.75				4300	1500	60
		2.0				4400	1600	120
		2.5				4700	1700	180
		3.0				5000	2000	180
		3.0				5000	2000	180
21	1600	1.0	1950x1750	1100x2100	2650x2400	4200	1350	45
		1.75				4300	1500	60
		2.0				4400	1600	120
		2.5				4700	1700	180
		3.0				5000	2000	180
		3.0				5000	2000	180

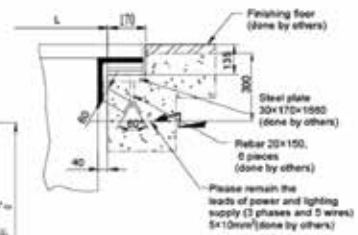
GRE 20 ESCALATOR (Indoor & Out door type)

Construction sketch

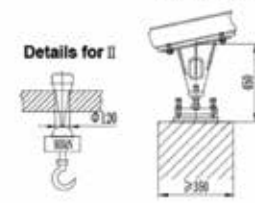
30°



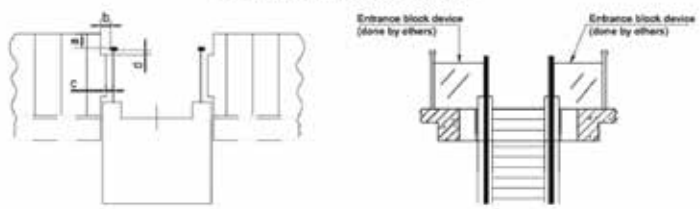
Details for I



Details for II



Details for entrance block device



a	b	c	d
≥ 100	80-120	≤ 120	25-100

Reaction force

Step width	600	800	1000
R1 (kN)	4.1xL2+16.5	4.5xL2+16.1	5xL2+18.5
R2 (kN)	4.1xL1+7.8	4.5xL1+7.8	5xL1+8.5
R3 (kN)	4.25xL+9.5	4.5xL+10.5	5.2xL+11.5
Remark	L, L1, L2 measured by M. Value of L1 & L2 less than 15m.		
Rise	6100	7100	7600
Motor power	1000	15kW	
	800	11kW	
	600	8kW	11kW

Standard specification and size

Escalator external width	A	600	800	1000
Escalator external width	B	1150	1350	1550
Civil opening width	C	1260	1460	1660
Distance between handrail centers	D	838	1038	1238
Civil opening width	E	1910	2110	2310
Civil opening width	F	1260	1460	1660
Support base length	G	1200	1400	1600

Note

- The sketch applies to civil construction of a single arrangement escalator with 8m < H < 7.5m and below.
- Upper end of truss should be extended for 417mm once step width 600mm chosen.
- Size measured by mm, some sizes may be changed. Subject to change without notice.

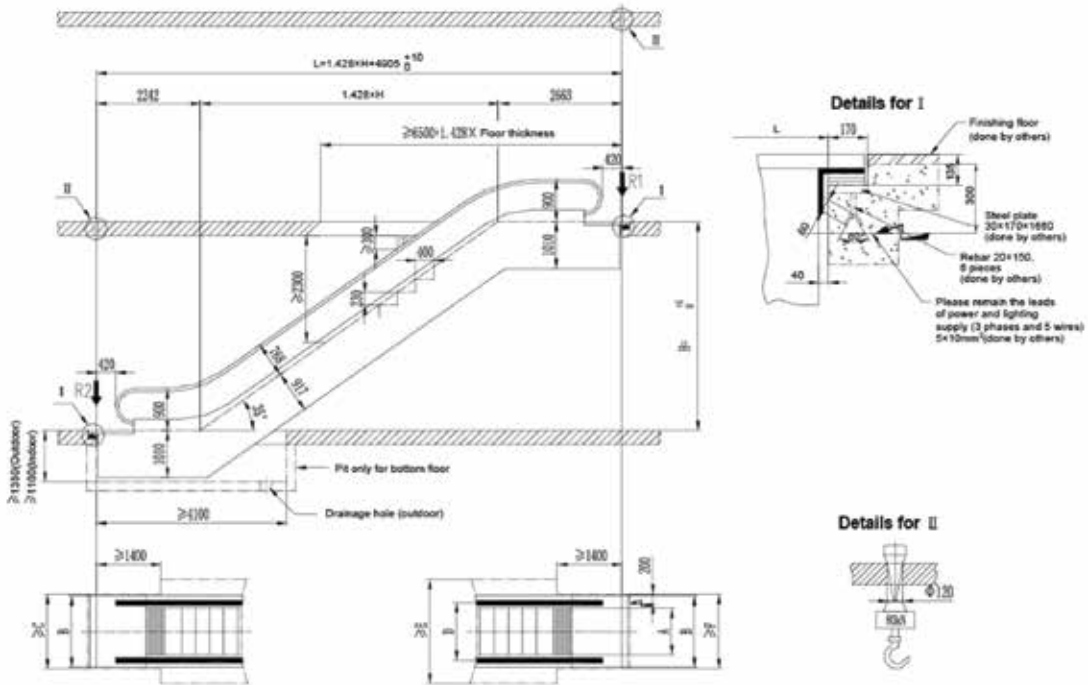
Specification

Type	GRE20	
Speed	0.5m/s	
Rise	30° mm	
Inclination	33°	
Supporting force R1	kN	
Supporting force R2	kN	
Supporting force R3	kN	
Power	Power supply	3P AC 380V 50HZ
	Lighting supply	1P AC 220V 50HZ

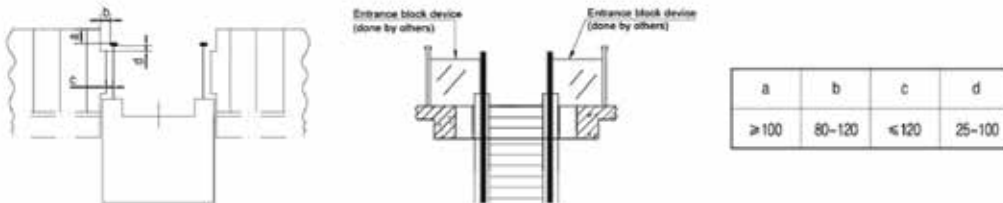
GRE 20 ESCALATOR (Indoor & Out door type)

Construction sketch

35°



Details for entrance block device



Reaction force & power

Step width	600	800	1000	Remark			
R1 (kN)	3.5xL+15.5	4xL+17	4.5xL+18.5	L measured by M			
R2 (kN)	3.5xL+10	4xL+11	4.5xL+11.5				
Rise	3000	3500	4000	4500	5000	5500	6000
Motor power	1000	5.5kW	8kW	11kW			
	800	5.5kW		8kW			
	600	5.5kW					

Standard specification and size

Escalator external width	A	600	800	1000
Escalator external width <td>B</td> <td>1150</td> <td>1350</td> <td>1550</td>	B	1150	1350	1550
Civil opening width <td>C</td> <td>1260</td> <td>1460</td> <td>1660</td>	C	1260	1460	1660
Distance between handrail centers <td>D</td> <td>838</td> <td>1038</td> <td>1238</td>	D	838	1038	1238
Civil opening width <td>E</td> <td>1838</td> <td>2038</td> <td>2238</td>	E	1838	2038	2238
Civil opening width <td>F</td> <td>1260</td> <td>1460</td> <td>1660</td>	F	1260	1460	1660

Note

- The sketch applies to civil construction of a single arrangement escalator with $H \leq 6m$ and below.
- Upper end of truss should be extended for 417mm once step width 600mm chosen.
- Size measured by mm, same sizes may be changed. Subject to change without notice.

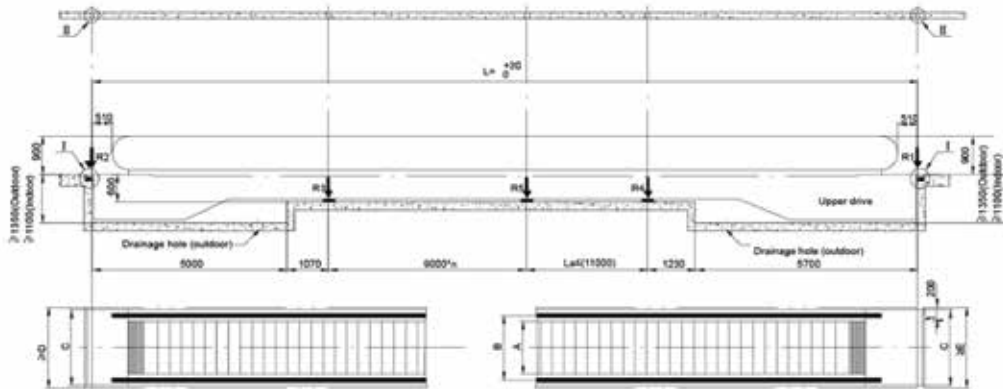
Specification

Type	GRE20	
Speed	0.5m/s	
Rise	$H \leq 6m$	
Inclination	35°	
Supporting force R1	kN	
Supporting force R2	kN	
Power	Power supply	3P AC 380V 50HZ
	Lighting supply	3P AC 220V 50HZ

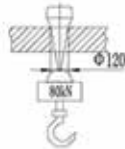
GRM 15 MOVING WALK (Indoor & Out door type)

Construction sketch

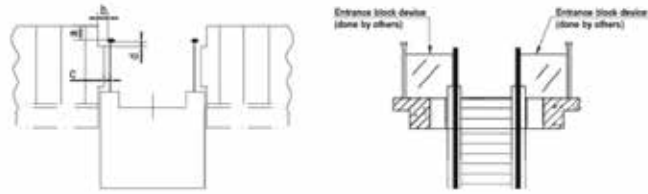
0°



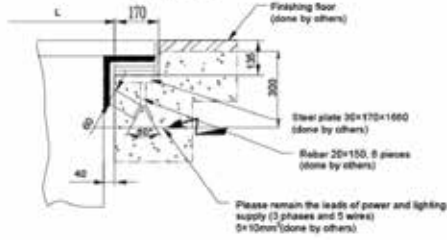
Details for II



Details for entrance block device



Details for I



a	b	c	d
≥ 100	80-120	≤ 120	25-100

	Pallet width		Pallet width	
	800	1000	800	1000
R1	32kN	35kN	A	800 1000
R2	31kN	33kN	B	1100 1310
R3	48kN	55kN	C	1400 1680
R4	50kN	57kN	D	1450 1660
R5	43kN	51kN	E	1480 1680

Note

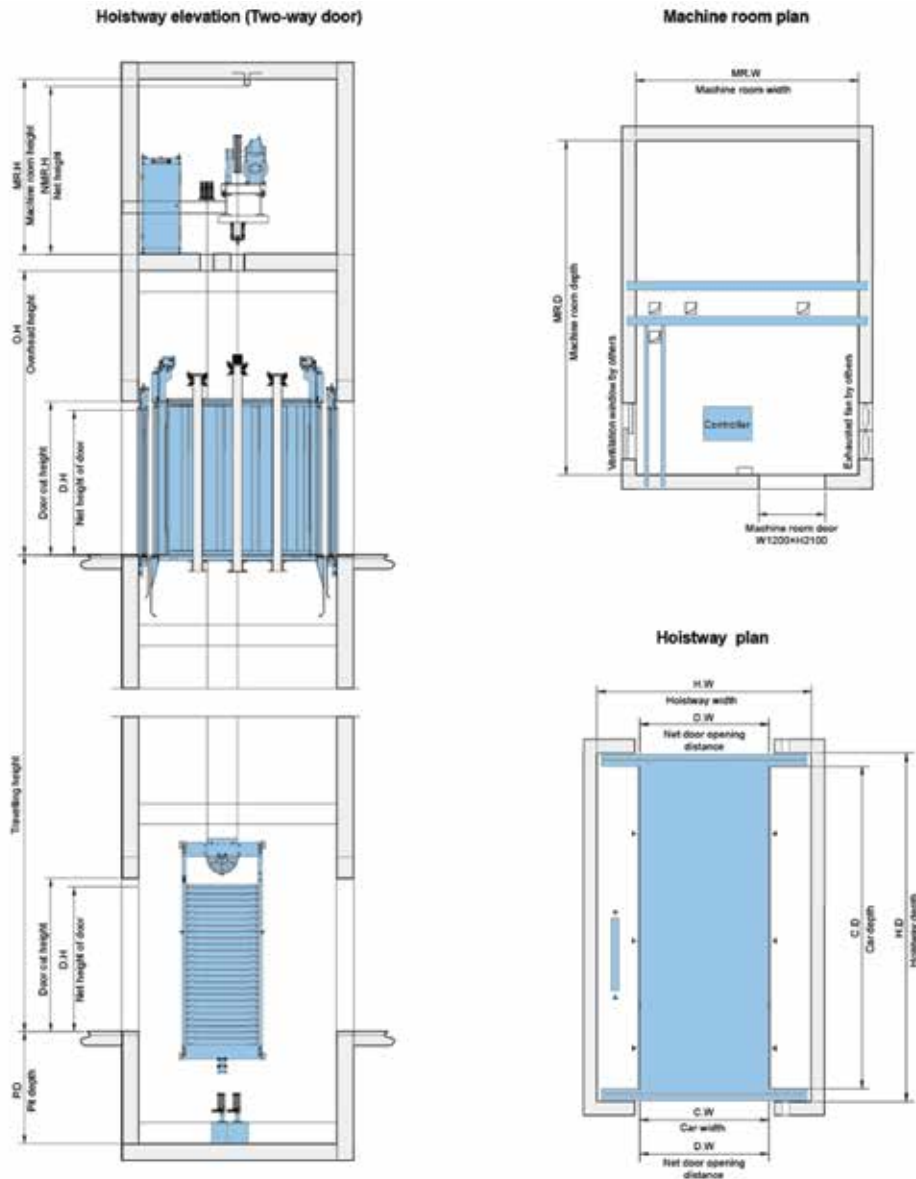
- The sketch applies to civil construction of a single arrangement moving walk with $L \leq 150m$ and below.
- Size measured by mm, some sizes may be changed. Subject to change without notice.

Specification

Type	GRM15
Speed	0.5m/s
Horizontal span	$L =$ mm
Inclination	0°
Supporting force R1	kN
Supporting force R2	kN
Supporting force R3	kN
Supporting force R4	kN
Supporting force R5	kN
Power supply	3P AC 380V 50HZ
	1P AC 220V 50HZ

GRA 10 CAR ELEVATOR

Construction sketch



GRA10 car elevator specifications

(Kg) Rated capacity	(m/s) Rated speed	Net size of door (mm)			Net size of car (mm)			Hoistway size (mm)			Machine room size (mm)			O.H (mm)	P.D (mm)	Max. Travelling height (m)
		4P center opening			Width	Depth	Height	Width	Depth	Height	Width	Depth	Height			
3000	0.5	2700x2200			2700	5500	2200	4400	8100	4400	6100	2700	4800	1700	30	
5000	0.25	2700x2200			2700	6000	2200	4400	6600	4400	6600	2700	4800	1700	15	

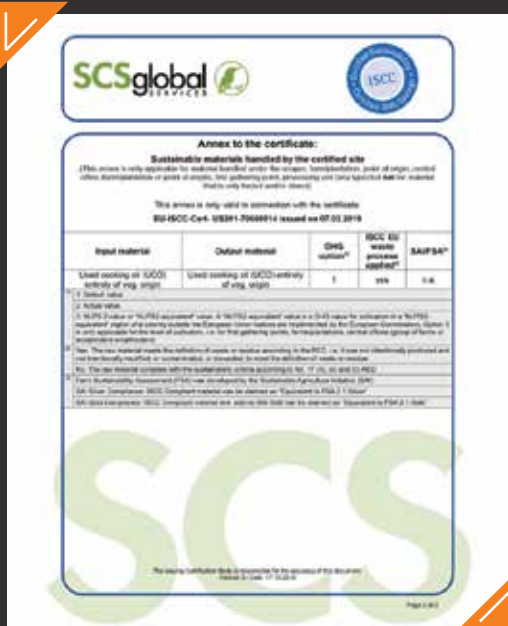
CERTIFICATIONS FOR ERIGO

International Sustainability Carbon Certification (ISCC)
Since 2017 In Qatar

International Sustainability Carbon Certification (ISCC)
Since 2018 In Oman

International Sustainability Carbon Certification (ISCC) for Malaysia – under process.

ISO 9001 – 2015 Since 2016 for Erigo Elevators and since 2018 for Erigo Trading in Qatar



FUJI LIFT CO., LTD

LETTER OF AUTHORIZATION

FUJI LIFT declares that

ERIGO ELEVATORS WLL based at AL BAKER TRADING COMPLEX PO BOX . 201438 OLD AIRPORT, MATHAR
KADHEEM DOHA-QATAR Cotact :00974 333 67 926, 44121943

is the agent of '**FUJI LIFT**' and authorized to distribute all our products, to discuss, to negotiate
and to promote on behalf of '**FUJI LIFT**' in **QATAR**.

Professionals from **ERIGO ELEVATORS WLL** has been trained well to install, to repair and to maintain all the
products of '**FUJI LIFT**' and we confirm to provide all our support and services to them in
whenever required

Validity: Two years
Mar. 01, 2018

FUJI LIFT CO., LTD

Certificate No: FUJILIFT-Q180301S

FUJI LIFT CO., LTD

LETTER OF AUTHORIZATION

FUJI LIFT declares that

ERIGO ELEVATORS WLL based at AL BAKER TRADING COMPLEX PO BOX . 201438 OLD AIRPORT, MATHAR
KADHEEM DOHA-QATAR Cotact :00974 333 67 926, 44121943

is the agent of '**FUJI LIFT**' and authorized to distribute all our products, to discuss, to negotiate
and to promote on behalf of '**FUJI LIFT**' in **QATAR**.

Professionals from **ERIGO ELEVATORS WLL** has been trained well to install, to repair and to maintain all the
products of '**FUJI LIFT**' and we confirm to provide all our support and services to them in
whenever required

Validity: Two years
Mar. 01, 2018

FUJI LIFT CO., LTD

Certificate No: FUJILIFT-Q180301S

OTISRISE ELEVATOR CO.,LTD

LETTER OF AUTHORIZATION

OTISRISE COMPANY declares that

ERIGO ELEVATORS WLL based at AL BAKER TRADING COMPLEX PO BOX . 201438 OLD AIRPORT, MATHAR KADHEEM DOHA-QATAR Cotact :00974 333 67 926, 44121943

is the agent of **'FUJI-ERIGO' LIFT** and authorized to distribute all our products, to discuss, to negotiate and to promote on behalf of **'FUJI-ERIGO' LIFT** in QATAR.

Professionals from **ERIGO ELEVATORS WLL** has been trained well to install, to repair and to maintain all the products of **'FUJI-ERIGO' LIFT** and we confirm to provide all our support and services to them in whenever required

Validity Two years

Jan.01,2020

OTISRISE ELEVATOR CO., LTD

Certificate No: FUJIERIGO-T180302

Certificate Of Sales Authorization

(2019) No. 1001Q For Qatar International Trading

After the professional assessment and review by the authorize unit, we grant the authorized unit to deal with the exclusive business as follows:

Authorized Unit Name: Erigo Elevators W.L.L

Address: AL BAKER TRADING COMPLEX PO BOX 201438, OLD AIRPORT, MATHAR KADHEEM DOHA - QATAR

Tel: _____ Fax: 00974 33367926

Specially Authorized Dealing Range:

According to the law and regulations of government in China & Qatar, the authorized company shall in charge of SRH Brand Escalator and Elevator Business in Qatar freely and completely, includes negotiation, business contract signing and so on.

Expire Date: October.1st.2019 till October.1st.2020

Authorize(Manufacturing) Company: Sicheng Elevator Co., Ltd.

Authorize(Manufacturing) Company Address: Sicheng Road, Lianshi Industrial park, Huzhou, Zhejiang, China .313013



We understand the need for sustainable and environment friendly alternate source of energy as the adverse effects of conventional fuels to the environment increasing very rapidly. Crude oil prices are also on frequent rise as the demand increases and energy consumption of the world is ever increasing, this has caused the fuel resources dwindle.

We believe that Biodiesel as the best replacement for diesel because of its unique properties like the significant reduction in greenhouse gas emissions, non-sulfur emissions, non-particulate matter pollutants, low toxicity and biodegradability. Conventional fuels are known for polluting air by emissions of sulfur dioxides, carbon dioxides, particulate matter and other gases. This has resulted to increased research in alternate fuels and a renewable source of energy.

Over last few years, Biodiesel has become the part of the equation because of its benefits over petroleum diesel and is obtained from renewable source like vegetable oils, animal fat etc. Biodiesel is superior to fossil diesel fuel in terms of exhaust emissions, cetane number, flash point and lubricity characteristics, without any significant difference in the heat of combustion of these fuels. Due to benefits like renewable in nature, low cost and greenhouse gas reduction potential, biodiesel is nowadays incorporated all over the world especially in developed countries like USA, France, Brazil in different proportions with diesel.

With a highly committed social vision in mind, Erigo collects waste cooking oil ie. used vegetable oil obtained from cooking food and refining it into biodiesel in an all sustainable way. Repeated frying for preparation of food makes the edible vegetable oil no longer suitable for consumption due to high free fatty acid (FFA) content. Waste oil has many disposal problems like water and soil pollution, human health concern and disturbance to the aquatic ecosystem. Erigo believes rather than disposing it and harming the environment, it can be used as an effective and cost-efficient feedstock for Biodiesel production



ERIGO TRADING - TUNISIA

Erigo Trading established its first Bio Diesel plant in Tunisia in the year 2019. It acts as the production facility to refine all the collected oil from other countries, ie Qatar, Malaysia and Oman. Erigo has successfully grabbed the Tunisian local market for the sale of Bio Diesel, produced from used cooking oil. It aims to start with the Bio Diesel export from Tunisia by the early 2020s.



ERIGO TRADING AND CONTRACTING LLC- OMAN

Erigo operates two warehouses in Oman for the collection and filtration of used cooking oil. The collected oil is being transported in tanks from its warehouses in Muscat and Salalah and exports to its own facility in Tunisia for refining and conversion to Bio Diesel. Apart from Tunisia, they also export the collected oil to European countries as well for the sustainable production of Bio-Diesel.



ERIGO TRADING AND CONTRACTING Sdn Bhd - MALAYSIA

In Malaysia, the operations team of Erigo collects used cooking oil and loads in ISO tanks and Flexi tanks to make it ready for filtration and export. The collected oil is being transported in tanks from its warehouses and exports to its own facility in Tunisia for refining and conversion to Bio Diesel. Apart from Tunisia, The collected oil is being exported many European countries and sustainably converted into Bio-Diesel which can be profitably used as a green energy alternative.



ERIGO TRADING AND CONTRACTING LLC- QATAR

Erigo has formed a definite association of three years with Qatar Green Building Council. The company, in coordination with other corporates in the country, takes part in most of the sustainability initiatives of Qatar Green Building Council.



Erigo collects Used Cooking Oil in ISO tanks or Flexi tanks and exports to their Tunisian facility as well as European nations for refining and conversion into Bio Diesel. Used Cooking Oil is stored in small Integrated Bulk Tanks – which has a valve in the bottom to drain out the excess Moisture and Impurities to get a good quality Used Cooking Oil. Filtration is also being done before the export to make sure the quality of the oil for bio diesel production.

ERIGO ELEVATORS WLL - QATAR



Erigo Elevators is a division of Erigo dealing with installation, commissioning and maintenance of various type of Elevators, Escalators and Dumbwaiters. As a successful player in the highly competitive Qatar market, Erigo's customer base has already surpassed many big names in the sector within a few years from its inception. The company currently handles maintenance service of 500+ elevators (28 brands) and a yearly installations count of 25+.



ERIGO CONTRACTS - QATAR

Erigo Contracts is another profit making division of Erigo. Based out in Qatar, Erigo Contracts is a complete service provider and contractor for both private and public sector companies in the region. It serves both medium and large-scale companies, offering the security of a skilled management team and the flexibility afforded.



Kerala's First Bio Diesel Plant

A Project aiming on Kerala's Self-sufficiency vision by 'value adding' and 'Job creating' establishments in the State



Recent studies have proven that Biodiesel is the future fuel of automobiles in India. Erigo takes part in the Biodiesel revolution and thus expanded its arena to India, by the institution of Erigo Bio Fuels in its southern state of Kerala. As in other countries, Erigo collects used cooking oil; filter it and refining to make Biodiesel, which can undoubtedly help the nation to overcome its dependence on diesel, as biodiesel has the combus-

tion properties which are very similar to those of petroleum diesel.

To make its vision true, Erigo has joined Kerala's Self-sufficiency vision by 'value adding' and 'Job creating' establishments in the State, and thus formed Erigo Bio Fuels Pvt Ltd.

ERIGO HYGIENE QATAR



Erigo Hygiene applies German Technology for the optimum quality hygienic and mechanized cleaning solutions for water storage tanks. The well trained and professional water tank cleaners of Erigo Hygiene can guarantee you 100% pure and hygienic water as they make sure to use only the safe, effective and eco friendly anti-bacterial agents in the cleansing process.





A principal group Company of Erigo based out in India, Reigate Builders is an established real estate firm with a bunch of satisfied customers from its inception. Reigate is a Calicut based builder, offers well-designed, fine-tuned homes that suits customers of different interests. With ample experience of 25 years, Reigate Builders develops world-class structures, from traditional to contemporary that suits best for its customer needs.

Reigate Builders handles the management of any builders or developers and owning, building, operating and selling of Commercial Spaces, Residential Spaces and Immovable properties of all nature in India or abroad with vigorous tie-ups with private or public entities.



COMMITMENT

Reigate Builders has a well-organized and well-disciplined workforce and owns quite a large number of plant and equipment and is capable of executing quality construction works. REIGATE employees demonstrate a commitment to safety and quality. This commitment positively differentiates REIGATE from others.



SAFETY

Creating a safe and healthy work environment, the value of safety at REIGATE is instilled in everything it does through a guiding principle. REIGATE will not compromise the health and safety of its people. REIGATE employees look out for each other with a goal of zero incidents.



QUALITY

REIGATE's quality management program has been formulated to ensure a commitment to quality is apparent to all employees, clients, design partners, and trade contractors. This commitment improves quality performance, and improves client and design team satisfaction.

LOCATIONS



CONTACT US

Erigo Elevators and Trading LLC

Oman 📞 +968 94998600

Erigo Trading and Contracting WLL

Qatar 📞 +974 3323 8800

Erigo Elevators WLL

Qatar 📞 +974 3336 7926

Erigo Hygiene

Qatar 📞 +974 3392 8800

Erigo Trading and Contracting LLC

Oman 📞 +968 9714 9550

Erigo Traiding

Tunisia 📞 +216 2024 9232

Erigo Trading and Contracting SDN BHD

Malaysia 📞 +601 6916 0269

Erigo Bio Fuels Pvt Ltd

India 📞 +91 98475 17734

Reigate Builders P Ltd

India 📞 +91 94470 92396



To get perfect attitude
professionals for your hassle free
and cost effective altitued
management, do an
immediate try on



info@erigo.co



www.erigo.co



sales@reigatebuilders.com



www.reigatebuilders.com