



شركة أحجار مسقط ش م م
MUSCAT STONE CO LLC

MUSCAT STONE Co LLC

Marble
Granites
Travertine
Sand Stone
Slate
Onyx

Design & AutoCAD Drawings
Supply & Installation
Fabrication
Inspection Services
Restoration & Maintenance
Omani Marble Quarries
Logistics

360° Stone Decor Solutions

Slabs, Tiles, Countertop, Step & Risers, Skirting, Monuments, Balusters, Handrails, Columns, Cladding

OMAN - USA - AUSTRALIA - CANADA - INDIA
Tel: +968 24815123 • Fax: +968 24815383 • Email: www.ms@psal.com • Website: www.naturallive.com • P.O. Box 852, P.C. 112, Doha, Sultanate of Oman



CONTENTS

1. ABOUT US
2. HEALTH & SAFETY
3. KEY PERSONNEL & CERTIFICATIONS
4. MATERIALS & THEIR SOURCES
5. PRODUCTION & SITE FACILITIES & TECHNICAL CAPABILITIES
6. MAJOR PROJECTS
7. COMPANY INFORMATION
8. REGISTRATION & COMMERCIAL CERTIFICATES

Our Vision :

To attain sustained growth in the Stone Industry with a clear focus to achieving global status.

Our Mission :

To provide an unmatched product & service in Stone Décor, providing quality, delivering Value at the most competitive prices, committing with integrity to guarantee the satisfaction of our valued clientele.

Our focus is to provide a One-Stop 360° Stone Solution, transforming our clients prestigious corporate projects and buildings and customer homes into a 'Vision of Beauty' in tandem with promoting a healthy green environment.

Our Operations :

MSC uses innovative technologies, a team of highly experienced and qualified professionals, skilled technicians. This task force ensures efficient Sourcing of material from all over the world, Purchasing, Quality Testing, Fabrication, a Planned Production, a time-lined delivery Schedule and after sales support and service.

Nature of Business:

- *Procurement, Supply & Installation of all types of Natural Stone, its products and by-products.*
- *Grinding & Polishing of Marble & Granite (Re-surfacing & Restoration)*
- *Fabrication & Processing of all kinds of Natural Stone.*
- *Assistance to Clients in the preparation of Graphic Auto-cad drawings*
- *Inter-action with Consultants/Architects in the execution of specialized projects.*
- *Custom Design of Floorings, Tables, Counter tops, Vanities, Thresholds,*
- *Wall Claddings Treads & Risers, etc.*
- *Tender Evaluation, Estimation and Pricing.*
- *Inspection Services for Natural Stone & Omani Marble.*

Corporate Objectives:

- *To achieve creativity and innovation in natural stone.*
- *To enhance and maintain the beauty of natural stone*
- *To ensure professional workmanship in fabrication & installation*
- *To install natural stone to perfection*
- *To maintain Stone with the latest restoration technology*
- *To provide product support to our Clients with post contract services.*
- *Ensure a strong local focus while efficiently leveraging global resources*

HEALTH & SAFETY

2.1

SAFETY MANAGEMENT

Safety Policy

The company has a well-defined safety policy signed by the Managing Director, which has been well circulated to all employees.

Safety Roles & Responsibilities

Roles and responsibilities of all the personnel are well defined as indicated below:

Factory Manager	<ol style="list-style-type: none">1. Completely responsible for the implementation of the safety requirements given in this safety management plan.2. Allocate necessary resources for the implementation of this safety plan.3. Conduct safety management meeting at regular interval in the factory to review the safety performance of the factory and all the job sites with all the project engineers.
Project Manager / Engineer	<ol style="list-style-type: none">1. Monitor the implementation of this safety plan on a day to day basis.2. Ensure that the concerned site engineers / supervisors / foreman attend to the safety lapses noticed during the site visits.3. Participate in the safety meetings arranged in the factory by the Factory Manager or at the site by the clients (if any) to review the safety performance of the site.4. Conduct safety inspection during the site visit at least once every day.5. Planning the requirement of first aid, fire fighting and safety applicances well in advance and arranging the same.6. Ensuring that accident report in the prescribed format is sent to all concerned7. Organizing the inspection of scaffolding, ladders and power tools at a regular basis as per the enclosed checklists and maintaining a record of such inspection.8. Identifying one of the site supervisor to get trained by the Safety Manager so that he can provide safety induction to all the new employees at site, including sub contractors, if any.

Safety Manager

1. Conduct safety audits at site at regular intervals to monitor the implementation of the safety plan and to give recommendations for corrective and preventive actions, wherever required.
2. Provided training to one of the site staff, as identified by the Project Manager / Engineer to act as the safety coordinator.
3. Attend Safety meetings in the factory to help the Factory Manager t monitor the safety performance of the sites and the factory. Provide necessary advice to the Manager and the Project Engineers, wherever required.
4. Arrange safety trainings to the site staff at regular intervals.
5. Conduct necessary risk assessments for critical activities, whenever the site asks for such assistance.

Site Engineers / Supervisors / Foreman

1. Understanding this safety plan fully and following the same in their day-to-day activities.
2. Giving safety instructions to their workmen on a daily basis as a part of the job instructions, highlighting the possible hazards in that day's work and the precautions to be taken.
3. Keeping their work area neat and clean, especially at heights free from loose materials.
4. Taking an active part in the site safety meetings, if any.
5. Preventing horseplay of workmen.
6. Organizing Toolbox Talks to their workmen every week.
7. Sending all new employees to the safety coordinator before employing them to provide them safety induction.
8. Rectifying the unsafe conditions pointed out by Project Manager / Safety Manager or the site safety coordinator

HEALTH & SAFETY POLICY

Our Belief:

- *Management of Muscat Stone Co. LLC holds in high regard the safety, welfare and health of its employees.*
- *All accidents, which injure people, damage machinery and destroy materials, can be prevented by taking specific safety precautions.*
- *Implementation of safety is a line responsibility and safety personnel will work as catalyst to ensure that all site personnel fulfill their safety responsibilities voluntarily.*
- *It is good business practice to guard against accidents & occupational diseases and the associated losses arising out of the same.*

Our Goal:

- *Provide safest possible working environment to employees*
- *Encourage safe behaviors by suitable motivation*
- *Discourage all types of unsafe behaviors consistently without fail to imbibe a “Zero tolerance” culture*
- *Build safety & health requirements in all aspects of the organization*

Our Path:

- *H & S responsibility of all levels / functions of employees shall be specific, and be circulated to them with an intention to create proper understanding*
- *Every activity shall have a risk assessment and all employees shall be made aware of the hazards and control measures of the job being performed.*
- *Organization shall set periodic objectives to ensure continual improvement in the Health & Safety performance through risk reduction / elimination*
- *All local regulations and contractual obligations shall be complied with.*
- *Health & Safety performance shall be periodically monitored and be linked to annual performance appraisal of the employees at all levels / functions.*
- *All level of employees shall visibly display their commitment to health & safety matters by setting example to their subordinates.*
- *All the safety personnel in our Group Companies shall function under the corporate HSE department to empower them to function independently*

Health & Safety Management System of all the divisions shall be in line with International standards and their health and safety performance shall be monitored along with the overall business performance

KEY PERSONNEL

3

Partner/Chairman	: Mr. Jinesh A. Dharamsey
Managing Director	: Mr. Frederick Cordeiro
Project Director	: Mr. Mohammed Al Muwali
Project Site Engineer	: Mr Ehab Nakhla
Design Engineer	: Mr. Priya Raj Barua
Comm./Admin. Manager	: Ms. Loretta Maria
Public Relations Manager	: Mr. Ali Mantheri
Finance Manager	: Mr. Stanly Philipose
HR &Cr. Control Officer	: Ms. Zeyana Zadjali
Sales Executive	: Mr Ahmed AbdelMajid
Factory Foreman	: Mr. Om Prakash
Factory Supervisor	: Mr. Jeyaraj Gnanasehar
Material Inspector	: Mr. Jerome D'Souza

LIST OF PROJECTS EXECUTED WITH ALNASR

<u>Name of Project</u>	<u>Main Contractor/Client</u>	<u>Scope of Works</u>	<u>Value</u>
Muscat Securities Market, Ruwi, MBD	Oman Shapoorji Co.	Supply & Installation of Marble for flooring, wall Claddings, Steps/Risers.	236,000
Clock Tower Plaza, Ruwi	Galfar Const. Co.	Supply & Installation of Marble/Mosaic/Granite for flooring. Wall Cladding Steps/Risers	58,000
Tender Board HDQ Bldg, Al Khuwair	Oman Shapoorji Co.	Supply & Installation of Marble flooring, wall claddings, Septs/Risers	160,000
Grand Mosque, Ghala	Carlillon Alawi	(i) Supply & Installation of Marble (ii) Supply & apply landscaped material	250,000
Water Features - 2 nos, Al Khuwair Main road	Muscat Municipality	Supply & Installation of Marble	20,000
Rose Garden Development, Qurum	Muscat Municipality	Landscape, patterned pathways, floorings. Supply & Installation	78,000
Civil Service HDQ Building, Al Khuwair	Oman Shapoorji Co.	Supply & Installation of Marble for flooring, wall claddings, Steps / Risers	214,000
Rolux Showroom Building, Ruwi	Khinjji Ramdas	Supply & Installation of Marble for flooring, wall Claddings, Steps/Risers.	68,000
Wali's Office, Seeb	Hasan Juma Backer	Supply & Installation of Exterior Wall Cladding	185,000
Central Bank Of Oman, CBD	Al Turki Cont. Co.	Supply of Cut-to-size	135,000
Land Rover & Jaguar showroom, Ruwi	Mohsin Haider Darwish	Supply & Installation of Marble for flooring, wall Claddings, Steps/Risers.	65,000
Barr Al Jissah Resort & Spa	Carlillon Alawi	Supply & Install Omani flooring & wall cladding	130,000



4.

MATERIALS & THEIR SOURCES

4.1 Marbles

4.2 Granites

4.3 Travertine

4.4 Sandstone, Slate & Onyx

4.5 Material Sources

MARBLES

<i>Botticino Classico</i> 	<i>Rosalia</i> 	<i>Perlato Sicilia</i> 
<i>Light Emperador</i> 	<i>Dark Emperador</i> 	<i>Black Marquina</i> 
<i>Statuario</i> 	<i>Calacutta White</i> 	<i>Crema Marfil</i> 
<i>Giallo Siena</i> 	<i>Rosso Valencia</i> 	<i>Indian Green</i> 

and more.....

GRANITES

<i>Absolute Black</i> 	<i>Black Galaxy</i> 	<i>Kashmir Gold</i> 
<i>Paradiso Classico</i> 	<i>Lavender Blue</i> 	<i>Red Multi Colour</i> 
<i>Imperial Pink</i> 	<i>Jhansi Red</i> 	<i>Grey Sardo</i> 
<i>Indian Juparana</i> 	<i>Chilli Red</i> 	<i>Raw Silk Pink</i> 

and more.....

TRAVERTINE

<p><i>Classico Vein Cut</i></p> 	<p><i>Classico Cross Cut</i></p> 	<p><i>Yellow Vein Cut</i></p> 
<p><i>Noche Vein Cut</i></p> 	<p><i>Noche Cross Cut</i></p> 	<p><i>Red Vein Cut</i></p> 

and more.....

SANDSTONES

<p><i>Dholpur Beige</i></p> 	<p><i>Jodhpur Pink</i></p> 	<p><i>Agra Red</i></p> 
---	---	--

SLATES

<p><i>Copper Mount</i></p> 	<p><i>Nag Green</i></p> 	<p><i>Jak Black</i></p> 
--	--	---

ONYX

<p><i>Honey Onyx Cross</i></p> 	<p><i>Green Onyx</i></p> 	<p><i>Pink Onyx</i></p> 
--	---	---

and more.....

PRODUCTION FACILITIES

FACTORY PREMISES

Mabella Industrial Area

<i>Total Land Covered Area</i>	:	<i>10,000</i>	<i>Sq. Ft.</i>
<i>Office & Store</i>	:	<i>5,000</i>	<i>Sq.Ft.</i>
<i>Accommodation & Ablutions</i>	:	<i>4,500</i>	<i>Sq.Ft.</i>
<i>Open Space Used to Stock Material</i>	:	<i>8,500</i>	<i>Sq.Ft.</i>

Rusail Industrial Area (near Rusail Hotel)

<i>Open Space Used to Stock Material</i>	:	<i>10,000</i>	<i>Sq.Ft.</i>
--	---	---------------	---------------

PRODUCTION FACILITIES

<i>No. of Factory</i>	<i>2</i>
<i>No. of Work Force Incl Installation team</i>	<i>72</i>

TRANSPORT FACILITIES

<i>Trailers</i>	<i>2</i>
<i>Hiab Truck -10 ton</i>	<i>1</i>
<i>Truck - 3 ton</i>	<i>2</i>
<i>Cars</i>	<i>7</i>
<i>Fork Lift – 3 ton</i>	<i>1</i>
<i>Gantry Crane – 5 ton</i>	<i>1</i>

PLANT & MACHINERIES - FACTORY

1. <i>Automatic Bridge cutting</i>	2 nos
2. <i>Semi-Automatic Angle & Profiles Cutting Machine</i>	3 nos
3. <i>Trolley – Edge cutting machine</i>	5 nos
4. <i>Edge Polishing Machine (Wet)</i>	20 nos
5. <i>Angle Grinder Big (Dry)</i>	18 nos
6. <i>Angle Grinder Small (Dry)</i>	56 nos
7. <i>Surface Polishing Machine</i>	3 nos
8. <i>Anchor Drilling Machine</i>	14 nos
9. <i>Flooring Final Polishing & Buffing Machine</i>	2 nos
10. <i>Auxiliary</i>	
▪ <i>Air Compressor</i>	1 no
▪ <i>Water Recycling Plant</i>	1 no
11. <i>Flamming Unit</i>	1 unit
12. <i>Steel Fabrication Workshop (in house)</i>	1 unit
13. <i>Electrical Service Workshop (in house)</i>	1 unit

PLANT & EQUIPMENTS – IN HOUSE

SL. NO	NAME	FLEET NO:	MODEL	TOTAL NOS.
1	Komatsu Excavator	EX/01	PC-400-7	4
2	J C B Excavator	EX/03	JS 330	1
3	Komatsu Excavator	EX/06	PC-300-7	1
4	Komatsu Excavator	EX/08	PC-600-7	1
5	J C B Excavator	EX/09	JS220	1
6	Hittachi Excavator	EX/12	ZX400LCH-3	3
7	Komatsu Excavator	EX/17	PC-450	1
8	Komatsu Excavator	DZ/05	D155A-2	1
9	JCB Tele Handeler	THL/11	JCB535-125	8
10	Komatsu W/Loader	WL/01	WA470-3	2
11	JCB W/Loader	WL/02	JCB426HT	1
12	Komatsu W/I Loader	WL/03	WA-470-3	1
13	Komatsu- Dump Truck	DT/01	HM400-I	4
14	CAT Skid Loader	SKL/01	216B	1
15	New Holland	SKL/02	L150	1
16	Hino Fuel Tanker	FT/01	FG1PUB 4x2	2
17	Hino Water Tanker	WT/01	ZS1EPVA 6x4	2

LABOUR & STONE INSTALLATION **WORK FORCE**

SL. NO	STAFF / LABOUR CATEGORY	DEPARTMENT	TOTAL NO
1	FOREMEN	FACTORY/SITE	4
2	SYSTEM ADMINISTRATOR	FACTORY	2
3	SUPERVISORS	FACTORY/SITE	4
4	MACHINE OPERATORS	FACTORY	11
5	MOULDERS / POLISHERS	FACTORY	9
6	FORKLIFT OPREATORS	FACTORY	2
7	DRIVERS	FACTORY	3
8	STONE INSTALLERS - MASONS	SITE EXECUTION	16
9	STONE INSTALLERS - HELPERS	SITE EXECUTION	21
TOTAL WORK FORCE			72

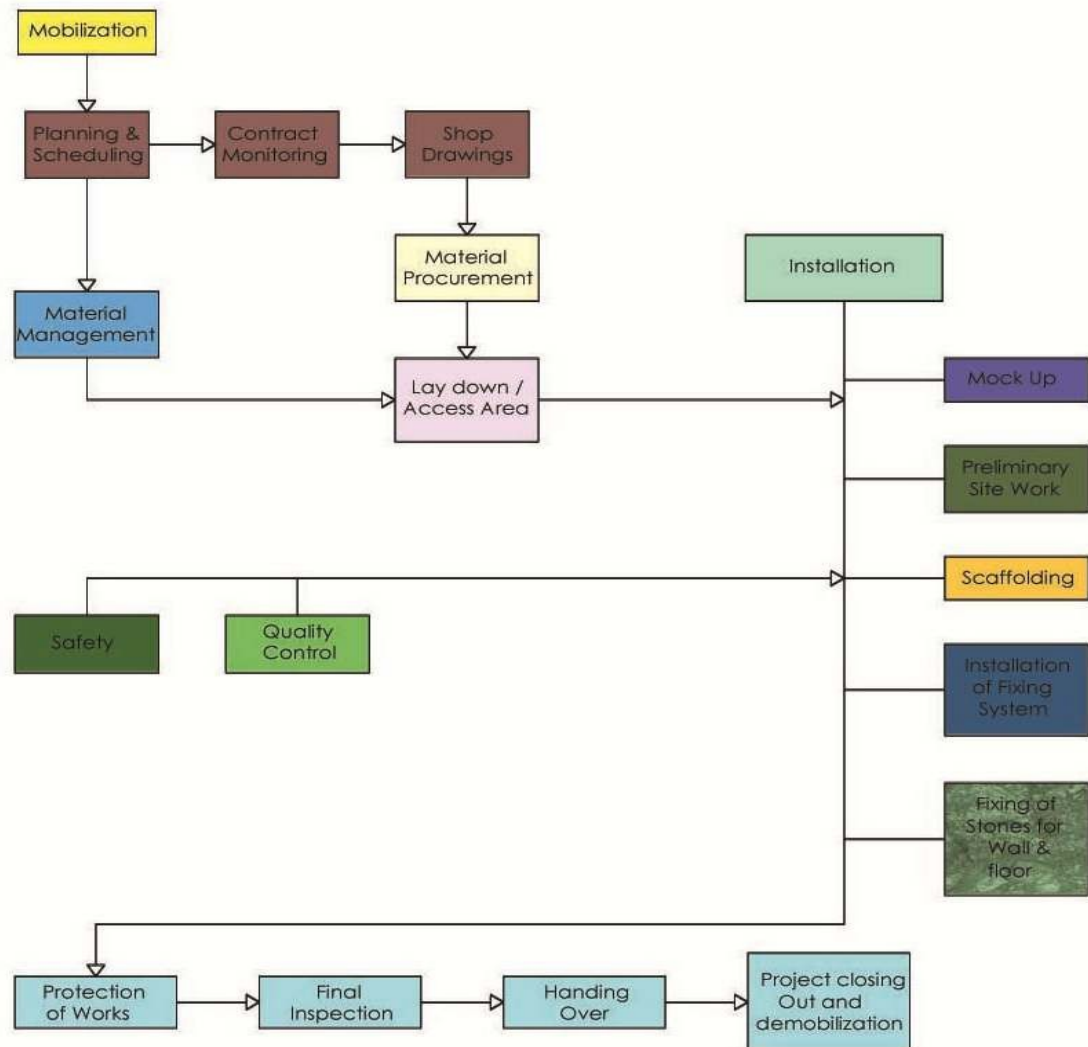
TECHNICAL CAPABILITIES & SUPERVISION

Preamble

MUSCAT STONE CO. LLC has a full-fledged team comprising of experts in stone work and are capable of executing project of any nature in time as per International Standards & Specifications.

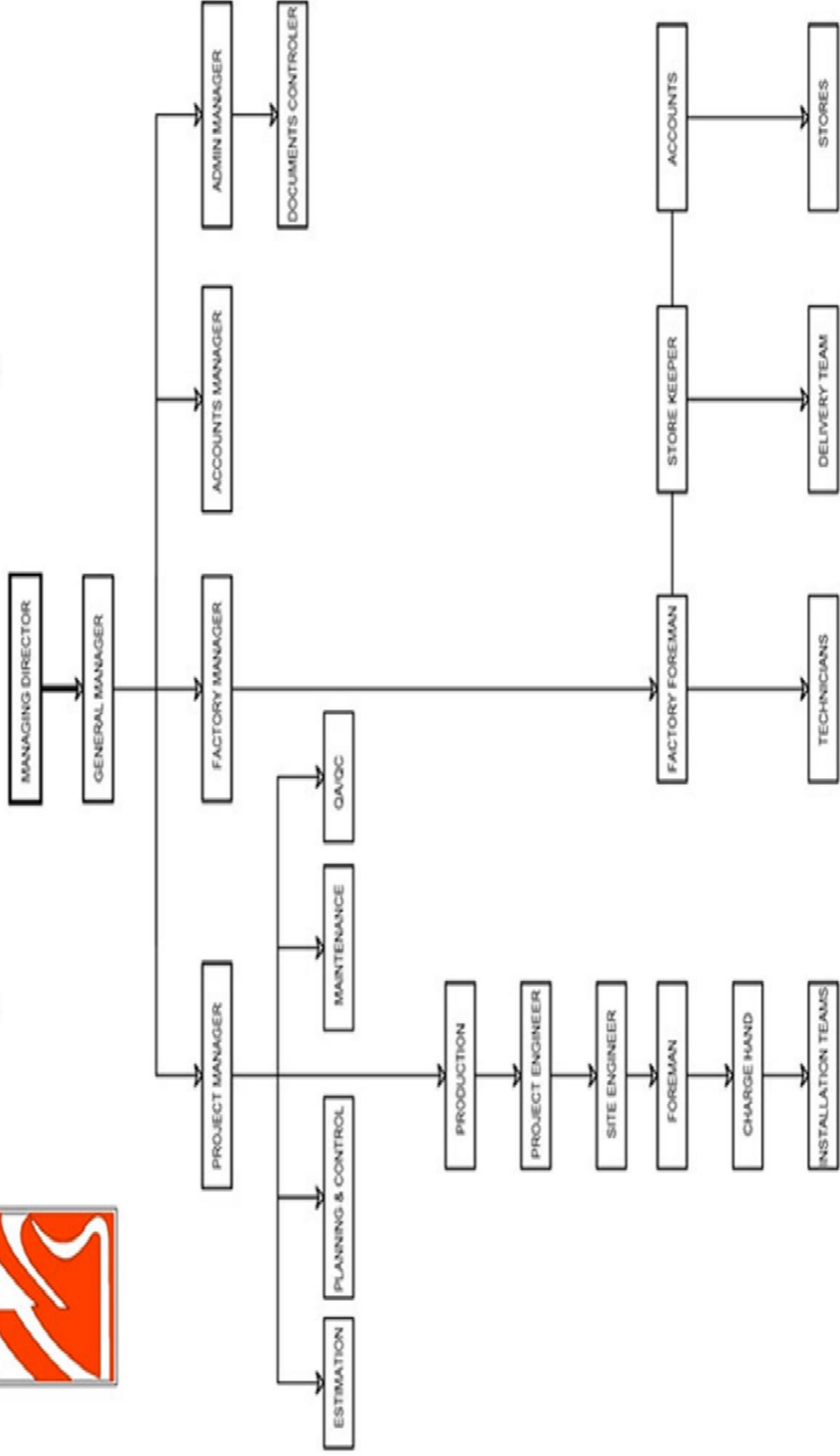
All our construction activities comply with the quality defined by the contract documents and also ensure that necessary systems and procedures are adopted for monitoring the construction process

Typical Project Execution Team



Contd....

COMPANY ORGANIZATION CHART



Contract Monitoring

Contract shall be managed and monitored as follows:-

- *Scheduling the activities as per approved Program or Works*
- *Submit project progress report for approval to the concerned authority*
- *Prepare monthly valuation and claims based on approved progress report*
- *Prepare variations for changes / additional works*
- *Receive payments*
- *Submit monthly / weekly reports*
- *Schedule and update construction Programme, cash flow and resource requirement*

Shop Drawings

Shop drawings will be prepared for the Stone Works, as per the requirement of the contract.

The shop drawing shall include:

- *General layouts and as many details necessary.*
- *Cutting and setting drawings including thickness, sizes, finishes etc*
- *All joint details*

Each stone or any other important item of fabrication shall be tag marked on drawings as part of the system, which shall be integrated in to Material Management System.

Material Procurement

A mock up sample shall be prepared at site or at fabricators plant for preliminary approvals. Confirmation on the availability of the preliminary approval samples in sufficient quantities from single quarries for each colour and type of stone shall be provided.

On approval of shop drawings, cutting list for fabrication of material will be released.

Code marking as per approved system shall be done on each piece of fabricated material at the factory using quality marker ink as per the approved shop drawing prior to its delivery to site. A list of such code mark shall be recorded in computerized system in order to monitor the progress (from site office) of a particular panel from its fabrication through its delivery and finally up to installation at site.

Mobilization

Upon award of contract, an in-house meeting shall be held to fine tune Muscat Stone standard site start up checklist to meet the requirements of the Project.

Project Kick-off meeting shall be held with Main Contractor, Client / Project Management, and if possible with Project Architect, to fully understand the quality expectation, milestone etc.

Mobilization shall include the appointment of key site personnel to carry out all technical and engineering coordination with the Project Management.

Temporary site office shall be made fully functional within the mobilization period.

Planning & Scheduling

The planning and scheduling work will start from the date of contract award.

A preliminary program of works will be submitted. Upon approval of preliminary program, a detailed program of works will be submitted, which shall basically cover;

- *Project Layout*
- *Milestone Schedule*
- *Detailed Construction Method Statement*
- *Schedule of Major Events*
- *Work Break down structure*
- *Resource Chart*

The team for planning and scheduling shall include the Planning Engineer together with the Project Manager, Project Coordinator and Architects.

The milestones issued for each activity shall be followed. This will include submission and approval of Document & Procurement logs and cost loaded programs.

It will be followed by submission and approval of all submittals as per respective Logs and it will be regularly updated throughout the contract period.

These submittals shall include:

- *Temporary site layout*
- *Organization chart & Staff CV's*
- *Material samples, Mockup,*
- *Off site factory inspection etc*

Planning & scheduling shall be carried out, which will be compatible with Client's requirement.

Quality Plan

The objective of the Quality Plan is to establish and set out those procedures, which need to be adopted in order to ensure that all work carried out at the project:

- *Accords fully with the design intent of the Project Architects*
- *Complies in full with the Contract Specifications*
- *Performs completely in accordance with the contract performance specifications.*
- *Follows fully the requirements of all standards captured by the contract*
- *Provides the client with all necessary information, calculation, samples and drawings to enable the client to identify all work has been carried in accordance with the Contract documents*

We shall maintain comprehensive quality control that will cover the following:

- *Inspection of Quarrying of stone and sorting of blocks*
- *Slab selection and block allocation*
- *Fabrication of stone and stone support components*
- *Packing and Shipping of stone*
- *Final processing of stone at site lay down area*
- *Installation at site*

Material Management

Procurement and Fabrication of materials (granite, marble, limestone etc) are planned in advance, and deliveries scheduled as per the requirement at site. Accordingly materials shipment are scheduled from the reputed stone fabricators and stored in warehouse at the Project site. Final finishing is done at factory site. All stocks of materials shall be recorded and tracked in PC indicating its location at the yard and also its intended location for installation in grids and levels in the project. All the materials (mainly stone) will be coded and monitored using Material Management System.

Contd....

Mock Up

Visual Mock ups are done as per the contract requirement and submitted for client's approval before commencing of actual work.

Safety

All project / construction activities will be strictly followed as per the Safety Plan to be approved by the Client. A detailed safety plan is attached with this proposal, which shall be submitted through Document Transmittal and get approved for implementation.

Preliminary Site Works

Preliminary site works listed hereunder would be done, before stating the actual installation work;

- Site Survey
- Levels and grid lines
- Plumb lines
- Alignment lines

Lay down/ Access/ Cranes

Approval shall be obtained in advance through proper submittal for:

- Material lay down areas
- Access routes and
- Shifting & Lifting facility

Contd....

Fixing System

The fixing system for stone cladding shall be of proprietary type, Grade 304, and consist of channels, angles, adjustable anchors, bolts etc.

Its erection shall be done as per structural design for each typical fixing arrangement, all to the Consultant's approval.

Stone Fixing

Walls

The stone cladding on wall shall be dry, open or closed joint and mechanically fixed on stainless steel system. Drilling on stone for the finished supports shall be done at the site.

Floors

A single coat of sealant would be applied on the back of the stone. The stone on floor shall be laid either using cement / sand mortar, all to Architects approval. The slope shall be predetermined and set at site at regular interval using cement / sand mortar.

The subsequent grouting / cleaning / polishing etc. shall be done using appropriate method and material to Consultant's approval.

Protection Works

Wall Protection

The wall cladding shall generally be protected using barrier tape along and at a safe distance from the wall in all accessible areas.

Floor Protection

Upon completion of works the flooring shall be protected using a barrier tape all round the wet construction area until it is properly dried, cured and hardened. Later, when the Consultant's inspection / approval is done, the entire area shall be protected using 20mm thick gypsum bedding laid on top of the stone floor.

Contd....

Final Inspection

All surfaces, joints of stone and stone flooring, etc. shall be rechecked and rectified at the end of completion of works in each particular area of elevation and plan.

Each area shall be offered separately for consultant's inspection and approval using appropriate forms.

Final inspection for the overall works shall be done in co-ordination with the other packages and the main contract works.

Handing over

Upon completion of the final inspection, each area will be handed over.

Project Closing out & demobilization

It will be ensured that the works are completed including all aspects for the items/ areas, which are to be snagged.

Snagging procedure and snag works shall be carried out as a whole by programming the works in sequence for better co-ordination.

Engineer's inspection and listing of all snag shall be carried out as per specifications and the completion programme shall be offered.

The action list shall be prepared for all snags including required completion date and sent to the concerned sub-contractors and Project Engineers/ Site Engineers etc.

De-snagging will be carried out as per agreed procedure for a sample area and Engineer's approval shall be obtained. Based on this, de-snagging to other areas shall proceed and when completed for one Area / Floor / Zone, Engineers inspection shall be arranged and final approval obtained.

Contd....

6.

MAJOR PROJECTS

- 6.1 List of Major Projects Completed
- 6.1.1 – 6.1.9 Major Completed Projects with Pictures

- 6.2 List of Projects in Progress/Completed
- 6.2.1 – 6.2.6 Major Projects with Pictures

- 6.3 List of Projects / Tenders under negotiation

LIST OF MAJOR PROJECTS COMPLETED

PROJECT NAME	VALUE (OMR)	CLIENT	CONTRACTOR	CONSULTANT
SULTAN QABOOS GRAND MOSQUE	355,660	ROYAL COURT OF AFFAIRS	ROYAL COURT OF AFFAIRS	ROYAL COURT OF AFFAIRS
HATAT HOUSE 2	281,500	ASSARAIN INTERNATIONAL	ASSARAIN INTERNATIONAL	KAMAL ISMAIL
CONSTRUCTION OF 250 VILLAS AT BARKA & SUWAIQ	440,339	MINISTRY OF HOUSING	AL RAIHI FOR DEVELOPMENT LLC (RADIC CONSTRUCTION)	GULF ENGINEERING & AL MANAR CONSULTING
LUXURIOUS PRIVATE VILLA	895,358	PRIVATE CLIENT	ASSARAIN INTERNATIONAL	INTERIOR DESIGNER - ABUDHABI
COMMERCIAL/RESIDENTIAL COMPLEX	580,862	BAHWAN CONTRACTING COMPANY	BAHWAN CONTRACTING COMPANY	CONSULTING ENGINEERING SERVICES LLC & VARIOUS
MINISTRY OF DEFENCE PENSION FUND IIQ BUILDING	231,117	MINISTRY OF DEFENCE	AL KHALILI UNITED CONSTRUCTION	GULF ENGINEERING
STAFF ACCOMMODATION BUILDING	124,070	GULFAR	GULFAR	NATIONAL ENGINEERING OFFICE
TECHNICAL COLLEGE AT SEEB	131,665	PUBLIC AUTHORITY FOR ELECTRICITY & WATER	ROYAL COURT OF AFFAIRS / ROYAL GUARDS OF OMAN	CONSULTING ENGINEERING OFFICE
IBIS HOTEL	133,345	ACTION HOTELS	AL RAWAHI INTERNATIONAL	IBN KHALDOON CONSULTANTS
MILITARY TECHNICAL COLLEGE	185,181	MINISTRY OF DEFENCE	OMAN SHAPOORJI	NATIONAL ENGINEERING OFFICE
MILITARY TECHNICAL COLLEGE	93,413	MINISTRY OF DEFENCE	KHIMJI RAMADAS CO.	NATIONAL ENGINEERING OFFICE
CONSTRUCTION OF 160 VILLA AT YITI	80,673	MINISTRY OF HOUSING	HASAN JUMA BACKER TRAD.& CONST.CO	MASHOOR
MINISTRY OF EDUCATION HQ BUILDING	240,000	MINISTRY OF EDUCATION	SAIF SAID AL AKHAMI	ALSAQF
TELECOMMUNICATION REGULATORY AUTHORITY	227,000	TELECOMMUNICATION REGULATORY AUTHORITY	ABU HATIM CO	NATIONAL ENGINEERING OFFICE
HOLIDAY INN	222,117	SEEB HOTEL	AL RAWAHI INTERNATIONAL	IBN KHALDOON CONSULTANTS
TELECOMMUNICATION REGULATORY AUTHORITY	78,450	TELECOMMUNICATION REGULATORY AUTHORITY	MUSCAT STONE LLC	NATIONAL ENGINEERING OFFICE
DAF ACCOMMODATION	39,927	MINISTRY OF DEFENCE	AL DAHLEEZ	MINISTRY OF DEFENCE
ROP BARKHA & ACCOMMODATION - 8 LOCATIONS	81,687	ROYAL OMAN POLICE	VARIOUS	ROYAL OMAN POLICE

LIST OF MAJOR PROJECTS COMPLETED

PROJECT NAME	VALUE(OMR)	CLIENT	CONTRACTOR	CONSULTANT
COMMERCIAL BUILDING	61,540	H.E.AI BUSAIDI	BAIT AI TAMER	MOBIL ENGINEERI
WATER DISTRIBUTION NETWORK IN NIZWA	76,614	PUBLIC AUTHORITY FOR ELECTRICITY & WATER	GALFAR	ENERGOPROJEKT
WUDAM NEVAL BASE	65,554	ROYAL NEVY OF OMAN	GALFAR	IBN KHALOON CONSULTANTS
RUB AI KHALI BORDER POST	56,000	ROP	GALFAR	ROP
ROP COMPLEX AT NAKHAL	107,550	ROP	SERV:ES &	ROP
ROP COMPLEX AT AI HAMRA	40,014	ROP	SAIF AI HARASI	ROP
MIXED USE DEVELOPMENT AT BOWSHER	951,149	PUBLIC AUTHORITY FOR SOCIAL INSURANCE	CARILLION ALAWI	OAR
EMBASSY BUILDING	329,766	CONFIDENTIAL	ALEC	HOEHLER +ALSALMY
SEZAO HQ BUILDING	205,000	SEZAO AUTHORITY	HJB/IYXC	D & A
CONSTRUCTION OF MUSANDAM HQ AND OTHER FACILITIES AT RAO	27,952	MOD	BURJ OMAN	MODES
SARAYA BANDAR JISSAH	48,592	MUSCAT BAY	TOWELL CONSTRUCTION	KEO
ROP COMPLEX AT AL AZAIBA	125,000	ROP	SAIF AI HARASI	ROP
VIP/CIP LOUNGE AT DUQM AIRPORT	85,000	OAMC	AL WADI AL KABIR CARPAINTRY	D & A
AHVK VILLA AT ALKHOUD	55,000	H.E. AHAMD ALI SALMAN KASHOOB	PRIVATE	HOEHLER +AL SALMY
EXTENSION OF ARMED FORCE HOSPITAL	145,000	MOD	INDEPENDENT CONSTRUCTION GROUP	KHATIB & ALAMI
ROYAL BRIDGE AT IBRA	45,000	MOTC	STFA - HLG JV	DAR AL HANDASAH

PROJECT:**Sultan Qaboos Grand Mosque****CLIENT:**

Royal Court of Affairs

PROJECT VALUE:

OMR 355,660/-

SCOPE OF WORK:

Resurfacing of entire Travertine floor (Approx 20,000 sq.m) and spreading of limestone chips to soft landscape area (Approx – 150,000sq.m)

CONTACT/REFERENCE:

Mr. Ashok Bhattachariya (Royal Court of Affairs), Project Co-Ordinator, GSM: 99368616.



SULTAN QABOOS GRAND MOSQUE

Contd....

PROJECT:**Hatat House 2****CLIENT:**

Assarain International

CONSULTANT:

Kamal Ismail

PROJECT VALUE:

OMR 281,500/-

SCOPE OF WORK:

Supply & installation of Granite External cladding, steps & risers, kitchen vanity tops & Omani marble flooring.

CONTACT/REFERENCE:Mr. Aseem Ahuja (Assarain International)
GSM: 99437783

HATAT HOUSE 2

6.1.3

PROJECT:

Military Technical College

CLIENT:

Ministry of Defense

SCOPE OF WORKS:

Preparation of shop drawings, sample approvals, supply and Installation of floor, wall cladding, steps & risers, column pedestals etc.

CONTACT/REFERENCE:

Mr. N. E. Kaka (Oman Shapoorji Construction Co. LLC), Deputy General Manager, GSM: 9945190



PROJECT: MILITARY TECHNICAL COLLEGE

Contd....

6.1.4

PROJECT:

Military Technical College

CLIENT:

Ministry of Defense

CONSULTANT:

National Engineering Office

MAIN CONTRACTOR:

Khimji Ramdas Construction Company

PROJECT VALUE:

OMR 93,413/-

SCOPE OF WORK:

Preparation of shop drawings, sample approvals, supply and Installation of vanity tops for accomodation buildings.

CONTACT/REFERENCE:

Mr. Roopak Udeshi (Khimji Ramdas Construction Company), Divisional Manager, GSM: 99346428



PROJECT: MILITARY TECHNICAL COLLEGE

PROJECT:

**Ministry of Defense,
Pension Fund HQ Building**

6.1.5A

CLIENT:

Ministry of Defense Pension Fund

CONSULTANT:

Gulf Engineering Consultancy

MAIN CONTRACTOR:

Al Khalili United Constructions

PROJECT VALUE:

OMR 231,117/-

SCOPE OF WORK:

Preparation of shop drawings, sample approvals, supply and Installation of floor, wall cladding, steps & external sandstone cladding.

CONTACT/REFERENCE:

Mr. Ahsan Ali (Ministry of Defense Pension Fund), Project Manager, GSM: 92118936



MINISTRY OF DEFENCE PENSION FUND
BUILDING

Contd...

6.1.5B



MINISTRY OF DEFENCE PENSION FUND BUILDING



MINISTRY OF DEFENCE PENSION FUND BUILDING

PROJECT:**IBIS Hotel****CLIENT:**

Action Hotels

CONSULTANT:

Ibn Khaldoon Consultants

MAIN CONTRACTOR:

Al Rawahi International

PROJECT VALUE:

OMR 133,345/-

SCOPE OF WORK:

Preparation of shop drawings, sample approvals, supply and Installation of floor, wall cladding, steps & risers.

CONTACT/REFERENCE:Mr. Sathya Prakash (Seeb Hotels LLC),
Client Representative, GSM: 99888271

IBIS HOTEL

PROJECT: Technical College at Seeb

CLIENT:	Royal Court of Affairs / Royal Guards of Oman
CONSULTANT:	Consulting Engineering Services
MAIN CONTRACTOR:	Al Sarah Contracting
PROJECT VALUE:	OMR 131,665/-
SCOPE OF WORK:	Preparation of shop drawings, sample approvals, supply and Installation of floor & steps & risers.
CONTACT/REFERENCE:	Mr. Nibal (Al Sarah Contracting), Contracts Manager, GSM: 99423914



TECHNICAL COLLEGE AT SEEB

PROJECT:**Telecommunication
Regulatory Authority HQ
Building****CLIENT:**Telecommunication Regulatory Authority
Oman**CONSULTANT:**

National Engineering Office

MAIN CONTRACTOR:

Abu Hatim LLC

PROJECT VALUE:

OMR 227,000/-

SCOPE OF WORK:Preparation of shop drawings, sample
approvals, supply and Installation of
sandstone wall cladding.**CONTACT/REFERENCE:**Mr. Sulaiman Lamki (Telecommunication
Regulatory Authority), Material
Specialist, GSM: 99878822

TELECOM REGULATORY AUTHORITY

Contd....



HOLIDAY INN HOTEL, SEEB

MAJOR PROJECTS IN PROGRESS

PROJECT NAME	VALUE (OMR)	CLIENT	CONTRACTOR	CONSULTANT
MIXED USED DEVELOPMENT AT BAUSHER - (PASI)	845,000	PUBLIC AUTHORITY SOCIAL INSURANCE (PASI)	CARILLION ALAWI	DAR AL HANDASH
SIDAB COAST GUARD HARBOUR	127,147	ROYAL OMAN POLICE	CARILLION ALAWI	KEO
GEMO	320,000	GEMO	ALEC	HOELER & PARTNERS
DOFAR MUNICIPALITY HQ BUILDING SALA	135,000	GOVERNER OF DOFAR MUNICIPALITY	SMC INFRA	EIDC
MINISTRY OF EDUCATION HDQ BUILDING	240,000	MINISTRY OF EDUCATION	SAIF AL AKHZAMI TRADING	AL SAQF ENGINEERING

6.2.2

PROJECT:

**Mixed Use Development
Bousher**

CLIENT:

PUBLIC AUTHORITY SOCIAL INSURANCE
(PASI)

CONSULTANT:

DAR AL HANDASAH

MAIN CONTRACTOR:

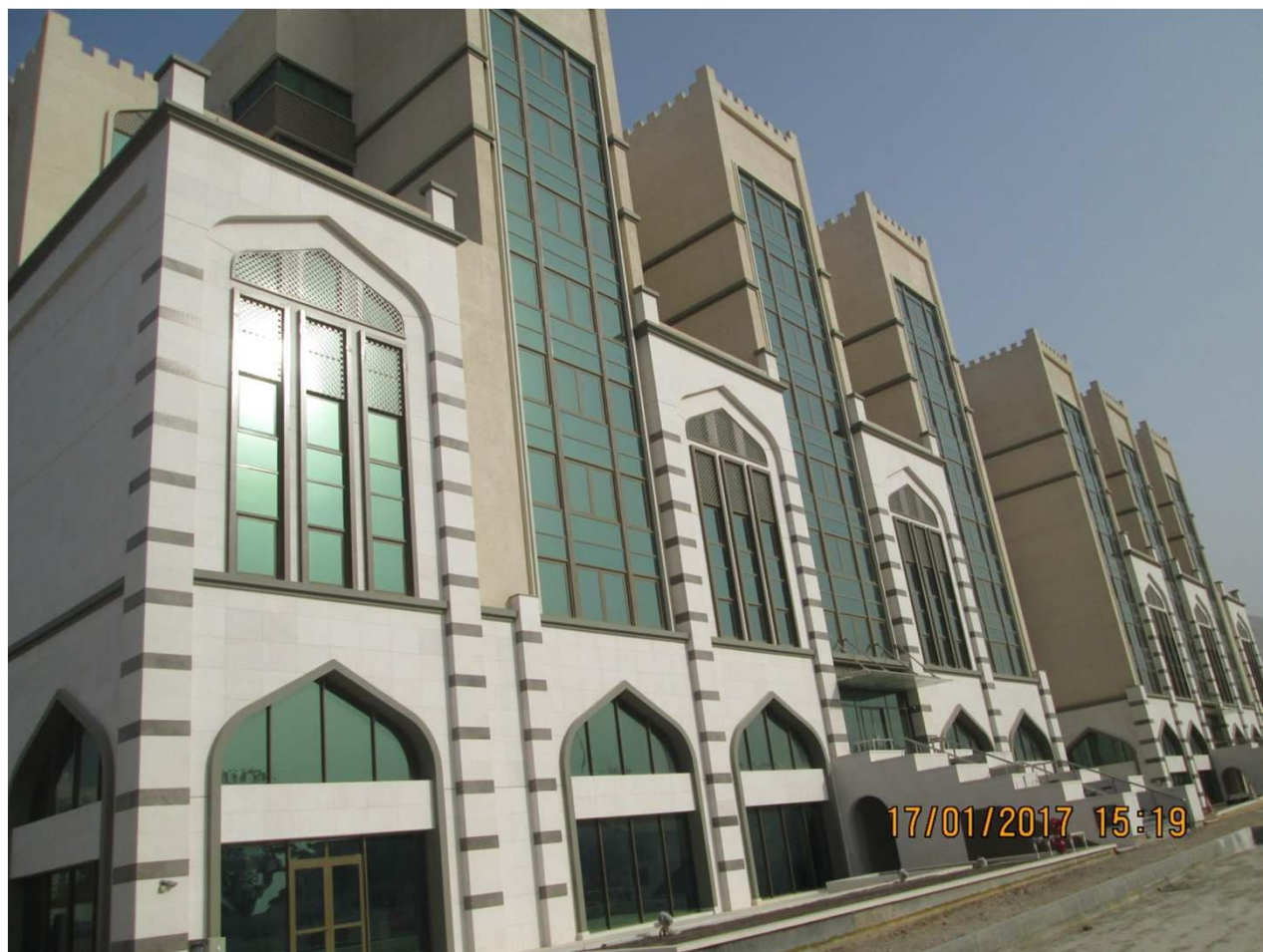
CARILLION 845,000/-

SCOPE OF WORK:

Preparation of shop drawings, sample
approvals, supply and Installation of
floor, wall cladding, steps & risers

CONTACT/REFERENCE:

Mr. Chris Jones

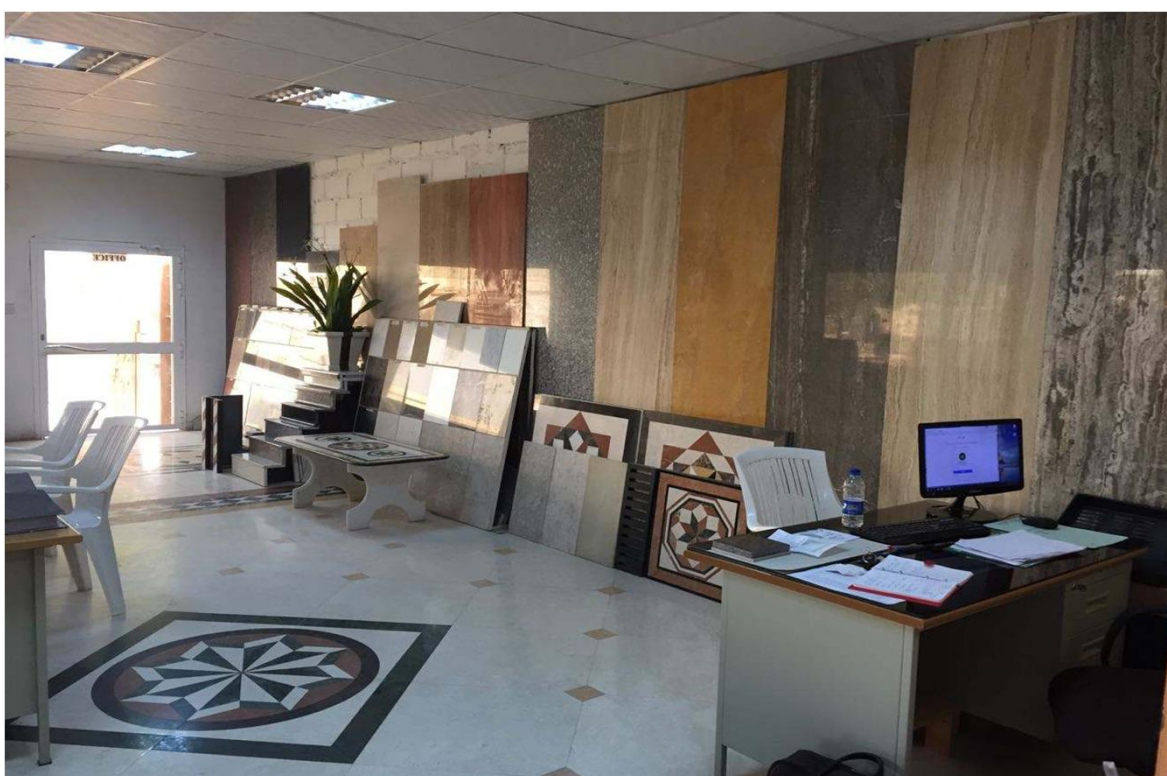


MIXED USE DEVELOPMENT -BOUSER



MIXED USE DEVELOPMENT -BOUSHER









MIA+BSI Code of Ethics

As a 2016 Member of MIA+BSI

Muscat Stone Company LLC

believes and affirms that:

The fabrication and installation of dimension-cut natural stone should meet MIA+BSI and other industry standards as articulated in the MIA+BSI *Dimension Stone Design Manual* and other technical publications, along with courteous and professional customer service. To achieve these goals, we pledge adherence to the following principles and policies:

- Our primary objective is a satisfied and happy customer, be it a homeowner, a building owner, or a design professional.
- We will maintain and conduct business in accordance with fair and honorable standards of competition.
- Honesty, integrity, quality, and professionalism guide our firm's business philosophy.
- High standards of health, safety, and product quality will be incorporated into every installation.

- We shall deal fairly with customers, as well as with our employees, our subcontractors, and our suppliers.
- We encourage research to develop new materials, techniques, tools, and equipment, as well as improved methods of stone fabrication and installation.
- We pledge to assist in the education and product knowledge of our firm's clients and customers (builders, kitchen & bath dealers, architects, designers, and homeowners) before, during, and after installation.
- We shall strive to promote a spirit of cooperation within the industry.

We assume these responsibilities freely and solemnly, mindful that they are continuing conditions to, and part of our obligation as, members of MIA+BSI.

David A. Castellucci

David Castellucci
2016 President
Marble Institute of America



Aaron Hicken

Aaron Hicken
2016 President
Building Stone Institute

Our firm agrees to promote, support, and abide by the MIA+BSI Code of Ethics.